

Doosan Infracore Construction Equipment

Aftermarket Sales Reference Book

Doosan Infracore Construction Equipment

Aftermarket Sales Reference Book

HOW TO IDENTIFY DOOSAN GENUINE PARTS		04
FILTER	Filter	10
	Maintenance Filter Kit	14
	Filter List by Model	25
OIL	Oil	28
GET	GET	38
	Tooth Pin Master	50
UNDERCARRIAGE	Undercarriage	54
	Rubber Track(Mini Excavator)	56
ENGINE	Piston Liner KIT	60
	Bearing KIT	61
	Valve KIT	62
	REMAN Engine	63
HYDRAULIC	Hydraulic Economic Parts	66
	Economic Parts for Main Pump	67
	O-Ring Box	70
	Seal Kit	71
	Seal Kit List by Model	72
DRIVE TRAIN, OTHER	Axle Seal Kit	78
	Bush & Pin for DX Model	79
	Seat Cover	80
	Harness Repair Kit	81
	PERO Kit(Rotating Pipe Kit)	82
	Battery	83
PRODUCT SUPPORT	DoosanCONNECT - Filter / Oil Management	86
	Protection Plus	88
	Maintenance Calculator	89

How to Identify DOOSAN Genuine Parts

Why is it important to use DOOSAN genuine parts?

It will save money through parts warranty, better machine productivity, and lower machine maintenance costs.



WARRANTY

DOOSAN offers 1,000-hour warranty for any new Doosan genuine parts sold through the Doosan approved dealers. DOOSAN genuine parts are designed and developed to fit DOOSAN machines perfectly. Using DOOSAN genuine parts guarantees the best machine performances and productivity, ensuring the customers' satisfaction.

QUALITY

Using DOOSAN genuine part improves machine durability and reliability. All DOOSAN genuine parts pass through the Doosan quality assurance process, which involves intensive “test, analysis, and improvement” iterations and tight quality controls.

DOOSAN GENUINE PARTS LABEL

GENERATION OF DOOSAN GENUINE PARTS LABELS



EXAMPLES OF COUNTERFEIT PACKAGING & LABELS

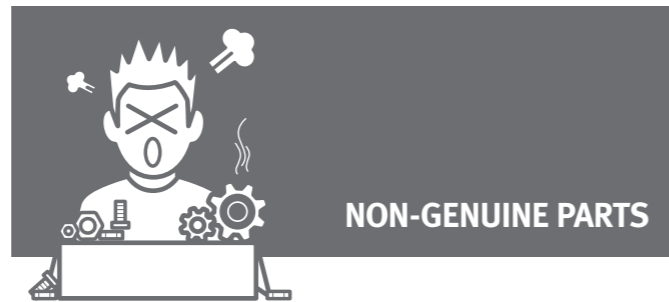


How to Identify DOOSAN Genuine Parts

Why is it important to use DOOSAN genuine parts?



GENUINE PARTS



NON-GENUINE PARTS



GENUINE PARTS



NON-GENUINE PARTS

CARVING



PRINTING



STICKER



NAME PLATE

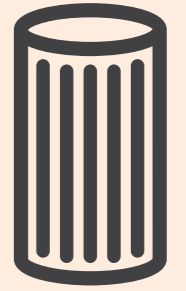


Doosan Infracore Construction Equipment

Aftermarket Sales Reference Book

Filter

DOOSAN Genuine Parts



Filter
Maintenance Filter Kit
Filter List by Model

Filter

DOOSAN Genuine Parts

When a filter does not work properly, system efficiency and machine productivity will be affected. In particular, this will cause abnormal wear and the early failure of your machine while increasing maintenance costs drastically.

DOOSAN Genuine Filters are designed and developed specifically for DOOSAN machines. They are built to meet DOOSAN's strict criteria and thereby assure reliable, high-quality filtration performance.

To help customers understand the differences between DOOSAN Genuine Filters and non-genuine filters, DOOSAN conducted a comparative test, the results of which clearly illustrate the differences!

EXAMPLES OF DAMAGE CAUSED BY USING NON-GENUINE FILTERS

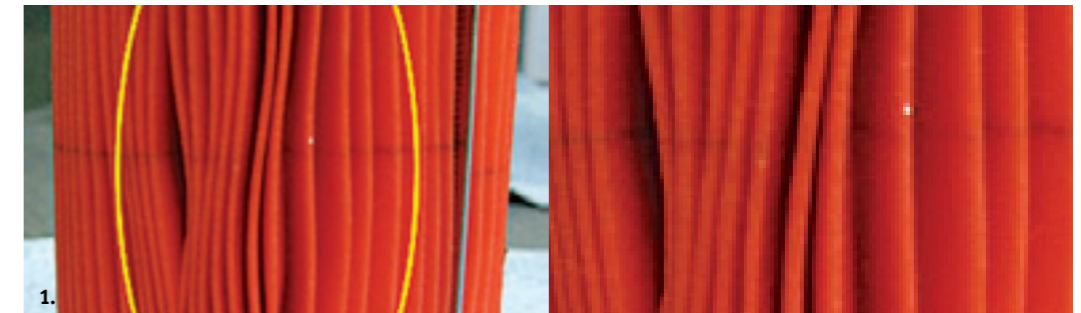


1. Abrasion of the engine cylinder
2. Damage to the piston
3. Breakage of the main pump parts
4. Abrasion of the main pump cylinder block
5. Failure of the injector
6. Breakage of the valve plate
7. Scratching of the cylinder rod
8. Excessive wear of the control valve spool

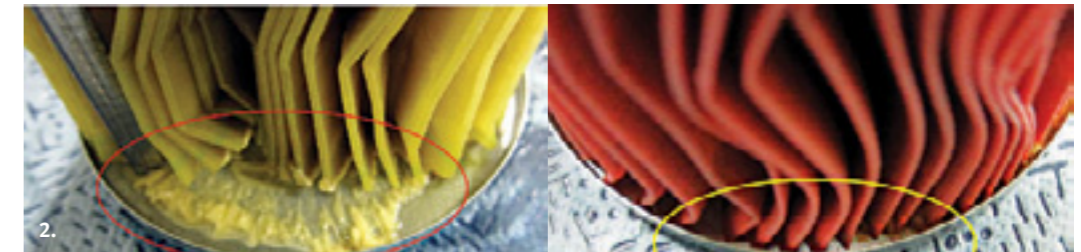
Most non-genuine filters do not meet DOOSAN's Quality Standard, and are greatly inferior in terms of performance and quality to DOOSAN Genuine Filters. Using non-genuine filters can cause abnormal engine and hydraulic system abrasion, breakage, and part failures, while shortening lifespan and increasing maintenance costs drastically.

INTERIOR OF NON-GENUINE FILTERS

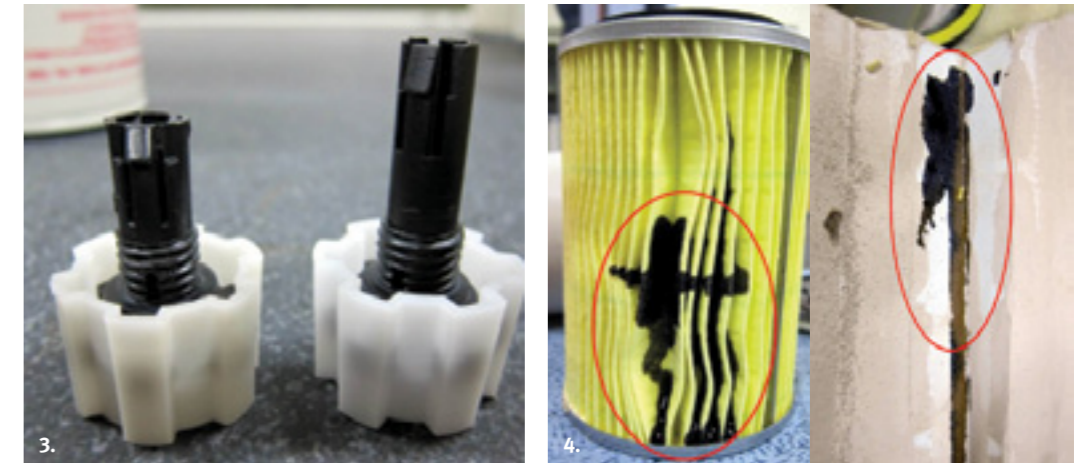
1. The use of inferior quality filtering material will fail to prevent the damaging inflow of contaminants. This results in adhesion between the folded surfaces of the filtering material as well as its deformation, which in turn leads to poor filtration performance.



2. Poorly bonded internal construction with low-quality adhesives leaves a filter vulnerable to the influx of contaminants and the separation of elements, causing critical damage to the filter.



3. Because non-genuine fuel filters have a very low capability to separate moisture from fuel, excessive moisture can enter the engine system, thus causing rust and abnormal abrasion, which will result in fuel system failures of the high-pressure pump and injector, etc.



4. Starch is used in non-genuine filters to harden the media, entailing the following potential problems: starch is likely to clog the pores of the media, and tends to gelatinize at high temperature, causing deformation and collapse of the pleated construction. Furthermore, it's highly likely that starch will attract mold.

Filter

DOOSAN Genuine Parts

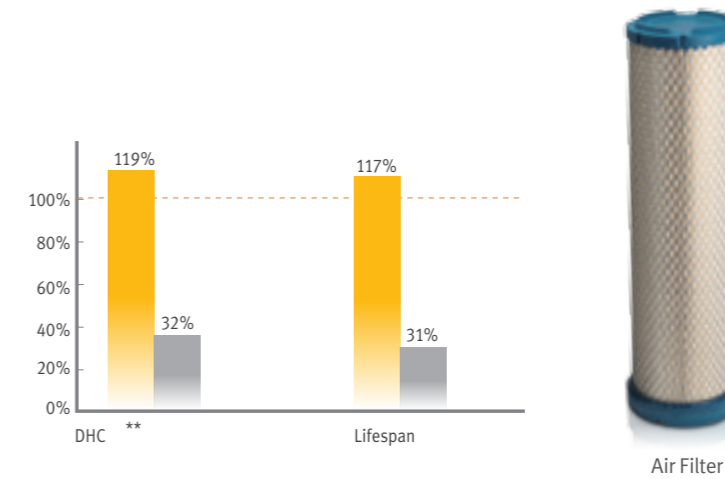
A DOOSAN GENUINE FILTER WILL PROVIDE YOU WITH :

- Outstanding filtration efficiency and low maintenance costs;
- Excellent DHC (Dust Holding Capacity) and stable filtration performance;
- Optimized design for DOOSAN machines and outstanding quality proven under harsh testing conditions;
- Longer lifespan with extensive filtering area;
- Maximizes machine up-time and increases productivity; and
- Maximizes the residual value of your machine.

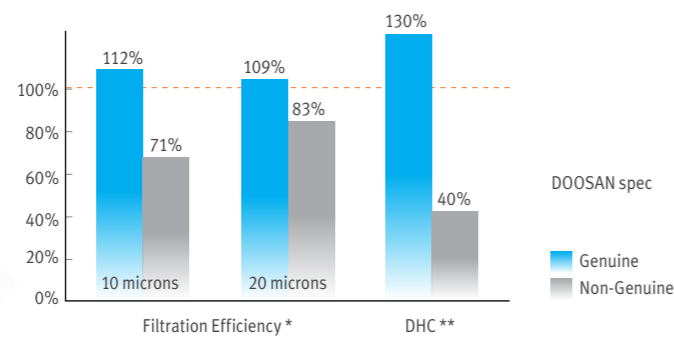
COMPARISON TEST RESULTS (AVERAGE DATA FOR TEST RESULTS)

* Filtration Efficiency: The ratio of dust trapped by a filter to the total amount of dust found in the air or oil.

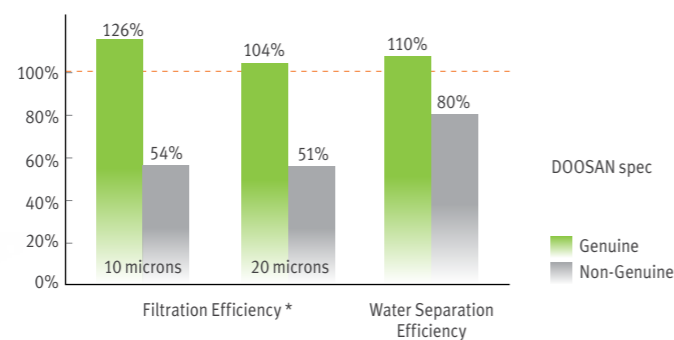
** DHC (Dust Holding Capacity): The total amount of dust which the filter media can hold without exceeding a certain level of resistance.



Engine Oil Filter



Fuel Filter



HIGH EFFICIENCY ENGINE OIL FILTER

- 1. Strengthened Housing**
Protects the filter with superior durability against external impact.
- 2. High-Quality Media**
The high-quality 2-layer media maximizes the filtration efficiency and DHC (Dust Holding Capacity) simultaneously while protecting engine parts and extending the lifespan of the filter.
- 3. Wire Mesh**
Maximizes the filtering area and DHC by preventing pleats from sticking together.



- 4. Spiral Center Tube**
Strong design ideal for working under high pressure.
- 5. Reinforced Seam**
High-pressure and long-cycle impulse resistance strengthens the filter and protects the engine.
- 6. End Cap**
Superior bonding prevents the inflow of contaminants.

Filter

DOOSAN Genuine Parts

MAINTENANCE FILTER KIT

Save time and cost with Filter Maintenance Kit

Filter Kit includes Doosan Genuine Filters which are designed and developed specifically for Doosan machines.

- BENEFITS**
- Save about 10% compared to purchasing all parts individually
 - Easy to order - kit has just 1 kit number
 - Ensure durability and productivity



AVAILABLE FILTER MAINTENANCE KIT

Applied Model	500 hr	1000 hr	1500 hr	2000 hr
DA30-5 (S/N: 721001~;741001~;7X1001~7X1132)	MX533993	101529-01479	MX533993	101529-01479
DA30-5 (S/N: 7X1133~7X9999)	MX533993	101529-01478	MX533993	101529-01478
DA40-5 (S/N: 821001~;841001~;8X1001~8X1100)	MX533994	101529-01477	MX533994	101529-01477
DA40-5 (S/N: 8X1101~)	MX533994	101529-01476	MX533994	101529-01476
DX140LC-5 (S/N: 1001~1087)	101529-01456	101529-01400	101529-01457	101529-01408
DX140LC-5 (S/N:1088~)	101529-01453	101529-01401	101529-01458	101529-01409
DX140LCR-5 (S/N: 1001~1039)	101529-01454	101529-01402	101529-01459	101529-01410
DX140LCR-5 (S/N: 1040~)	101529-01453	101529-01401	101529-01455	101529-01411
DX180LC-5	101529-01453	101529-01401	101529-01455	101529-01409
DX225LC-5	101529-01450	101529-01403	101529-01450	101529-01412
DX235LCR-5	101529-01450	101529-01403	101529-01450	101529-01413
DX300LC-5, DC09 (S/N: 1001~1038)	101529-01451	101529-01404	101529-01451	101529-01414
DX300LC-5, DC09 (S/N: 1039~1040)	101529-01451	101529-01405	101529-01451	101529-01415
DX300LC-5, DC09 (S/N: 1041~19999)	101529-01451	101529-01406	101529-01451	101529-01416
DX300LC-5, DL08 (S/N: 20001~)	101529-01452	101529-01407	101529-01452	101529-01417
DX340LC-5, DC09 (S/N: 10001~10034)	101529-01451	101529-01466	101529-01451	101529-01471
DX340LC-5, DC09 (S/N: 10035~10049)	101529-01451	101529-01467	101529-01451	101529-01472
DX340LC-5, DC09 (S/N: 10050~19999)	101529-01451	101529-01468	101529-01451	101529-01473
DX340LC-5, DL08 (S/N: 20001~)	101529-01452	101529-01469	101529-01452	101529-01474
DX380LC-5	101529-01451	101529-01470	101529-01451	101529-01475

SPECIAL PROMOTION FOR THE AVAILABLE FILTER MAINTENANCE KIT

Buy Doosan Filter Maintenance Kits,
 Get Doosan random gift!

PARTS LIST

Model	Part Number	Description	Q'ty	500 hr	1000 hr	1500 hr	2000 hr
				MX533993	101529-01479	MX533993	101529-01479
DA30-5 (S/N: 721001~; 741001~; 7X1001~7X1132)	MX528792	Air Filter HVAC-unit	1	0	0	0	0
	400504-00058	Engine Oil Filter	1	0	0	0	0
	MX055398	HYD Breather Filter Element	1	0	0	0	0
	MX501387	HYD Oil Return Filter Element	1	0	0	0	0
	MX528793	Recirculation Filter HAVC-unit	1	0	0	0	0
	400409-00006	Transmission Oil Filter	2	0	0	0	0
	MX506979	Air Filter Element, Inner	1		0		0
	MX506980	Air Filter Element, Outer	1		0		0
	400504-00158	Fuel Filter Element	1		0		0
	400504-00146	Fuel Filter Element	1		0		0

Model	Part Number	Description	Q'ty	500 hr	1000 hr	1500 hr	2000 hr
				MX533993	101529-01478	MX533993	101529-01478
DA30-5 (S/N: 7X1133~7X9999)	MX528792	Air Filter HVAC-unit	1	0	0	0	0
	400504-00058	Engine Oil Filter	1	0	0	0	0
	MX055398	HYD Breather Filter Element	1	0	0	0	0
	MX501387	HYD Oil Return Filter Element	1	0	0	0	0
	MX528793	Recirculation Filter HAVC-unit	1	0	0	0	0
	400409-00006	Transmission Oil Filter	2	0	0	0	0
	MX506979	Air Filter Element, Inner	1		0		0
	MX506980	Air Filter Element, Outer	1		0		0
	400504-00158	Fuel Filter Element	1		0		0
	400504-00063	Fuel Filter	1		0		0

Filter

DOOSAN Genuine Parts

PARTS LIST

Model	Part Number	Description	Q'ty	500 hr	1000 hr	1500 hr	2000 hr
				MX533994	101529-01477	MX533994	101529-01477
DA40-5 (S/N: 821001~; 841001~; 8X1001~8X1100)	MX528792	Air Filter HVAC-unit	1	0	0	0	0
	MX513783	Brake Cooling Filter Element	1	0	0	0	0
	400504-00058	Engine Oil Filter	1	0	0	0	0
	MX055398	HYD Breather Filter Element	1	0	0	0	0
	MX501387	HYD Oil Return Filter Element	1	0	0	0	0
	MX528793	Recirculation Filter HAVC-unit	1	0	0	0	0
	400409-00006	Transmission Oil Filter	2	0	0	0	0
	MX511952	Air Filter Element, Inner	1		0		0
	MX511951	Air Filter Element, Outer	1		0		0
	400504-00158	Fuel Filter Element	1		0		0
	400504-00146	Fuel Filter Element	1		0		0

Model	Part Number	Description	Q'ty	500 hr	1000 hr	1500 hr	2000 hr
				MX533994	101529-01476	MX533994	101529-01476
DA40-5 (S/N: 8X1101~)	MX528792	Air Filter HVAC-unit	1	0	0	0	0
	MX513783	Brake Cooling Filter Element	1	0	0	0	0
	400504-00058	Engine Oil Filter	1	0	0	0	0
	MX055398	HYD Breather Filter Element	1	0	0	0	0
	MX501387	HYD Oil Return Filter Element	1	0	0	0	0
	MX528793	Recirculation Filter HAVC-unit	1	0	0	0	0
	400409-00006	Transmission Oil Filter	2	0	0	0	0
	MX511952	Air Filter Element, Inner	1		0		0
	MX511951	Air Filter Element, Outer	1		0		0
	400504-00158	Fuel Filter Element	1		0		0
	400504-00063	Fuel Filter	1		0		0

PARTS LIST

Model	Part Number	Description	Q'ty	500 hr	1000 hr	1500 hr	2000 hr
				101529-01456	101529-01400	101529-01457	101529-01408
DX140LC-5 (S/N: 1001~1087)	710102-00005	Engine Oil Filter	1	0	0	0	0
	400508-00062	Fuel Filter	1	0	0	0	0
	400403-00404	Fuel filter (in Line)	1	0	0	0	0
	400504-00195	Fuel Filter Element	1	0	0	0	0
	400504-00254	Air Breather Filter Element	1		0		0
	400504-00156	Air Filter Element, Inner	1		0		0
	400504-00155	Air Filter Element, Outer	1		0		0
	400402-00076A	Aircon Filter	1				0
	400402-00077A	Aircon Filter	1				0
	400504-00249	Engine Breather Filter	1		0	0	0
	400504-00045	Fuel Cap	1		0		0
	400504-00225	HYD Oil Return Filter Element	1		0		0
	S8011850	HYD Oil Return Filter O-ring	1		0		0
	400504-00241	Pilot Filter Element	1		0		0
	400408-00049	Suction Filter	1				0
	S8011651	Suction Filter O-ring	1				0
	400406-01134	Urea Filter Service Kit	1			0	

Model	Part Number	Description	Q'ty	500 hr	1000 hr	1500 hr	2000 hr
				101529-01453	101529-01401	101529-01458	101529-01409
DX140LC-5 (S/N: 1088~)	710102-00005	Engine Oil Filter	1	0	0	0	0
	400508-00096A	Fuel Filter	1	0	0	0	0
	400504-00195	Fuel Filter Element	1	0	0	0	0
	400504-00254	Air Breather Filter Element	1		0		0
	400504-00156	Air Filter Element, Inner	1		0		0
	400504-00155	Air Filter Element, Outer	1		0		0
	400402-00076A	Aircon Filter	1				0
	400402-00077A	Aircon Filter	1				0
	400504-00249	Engine Breather Filter	1		0	0	0
	400504-00045	Fuel Cap	1		0		0
	400504-00225	HYD Oil Return Filter Element	1		0		0
	S8011850	HYD Oil Return Filter O-ring	1		0		0
	400504-00241	Pilot Filter Element	1		0		0
	400408-00049	Suction Filter	1				0
	S8011651	Suction Filter O-ring	1				0
	400406-01134	Urea Filter Service Kit	1			0	

Filter

DOOSAN Genuine Parts

PARTS LIST

Model	Part Number	Description	Q'ty	500 hr	1000 hr	1500 hr	2000 hr
				101529-01454	101529-01402	101529-01459	101529-01410
DX140LCR-5 (S/N: 1001~1039)	710102-00005	Engine Oil Filter	1	0	0	0	0
	400508-00096A	Fuel Filter	1	0	0	0	0
	400403-00404	Fuel filter (in Line)	1	0	0	0	0
	400504-00195	Fuel Filter Element	1	0	0	0	0
	400504-00254	Air Breather Filter Element	1		0		0
	400504-00156	Air Filter Element, Inner	1		0		0
	400504-00155	Air Filter Element, Outer	1		0		0
	400402-00001	Aircon Filter	1				0
	400402-00041	Aircon Filter	1				0
	400504-00249	Engine Breather Filter	1		0	0	0
	400504-00045	Fuel Cap	1		0		0
	400504-00225	HYD Oil Return Filter Element	1		0		0
	S8011850	HYD Oil Return Filter O-ring	1		0		0
	400504-00241	Pilot Filter Element	1		0		0
	400408-00049	Suction Filter	1				0
	S8011651	Suction Filter O-ring	1				0
	400406-01134	Urea Filter Service Kit	1			0	

Model	Part Number	Description	Q'ty	500 hr	1000 hr	1500 hr	2000 hr
				101529-01453	101529-01401	101529-01455	101529-01411
DX140LCR-5 (S/N: 1040~)	710102-00005	Engine Oil Filter	1	0	0	0	0
	400508-00096A	Fuel Filter	1	0	0	0	0
	400504-00195	Fuel Filter Element	1	0	0	0	0
	400504-00254	Air Breather Filter Element	1		0		0
	400504-00156	Air Filter Element, Inner	1		0		0
	400504-00155	Air Filter Element, Outer	1		0		0
	400402-00001	Aircon Filter	1				0
	400402-00041	Aircon Filter	1				0
	400504-00249	Engine Breather Filter	1		0	0	0
	400504-00045	Fuel Cap	1		0		0
	400504-00225	HYD Oil Return Filter Element	1		0		0
	S8011850	HYD Oil Return Filter O-ring	1		0		0
	400504-00241	Pilot Filter Element	1		0		0
	400408-00049	Suction Filter	1				0
	S8011651	Suction Filter O-ring	1				0
	400406-01134	Urea Filter Service Kit	1			0	

PARTS LIST

Model	Part Number	Description	Q'ty	500 hr	1000 hr	1500 hr	2000 hr
				101529-01453	101529-01401	101529-01455	101529-01409
DX180LC-5	710102-00005	Engine Oil Filter	1	0	0	0	0
	400508-00096A	Fuel Filter	1	0	0	0	0
	400504-00195	Fuel Filter Element	1	0	0	0	0
	400504-00254	Air Breather Filter Element	1		0		0
	400504-00156	Air Filter Element, Inner	1		0		0
	400504-00155	Air Filter Element, Outer	1		0		0
	400402-00076A	Aircon Filter	1				0
	400402-00077A	Aircon Filter	1				0
	400504-00249	Engine Breather Filter	1		0	0	0
	400504-00045	Fuel Cap	1		0		0
	400504-00225	HYD Oil Return Filter Element	1		0		0
	S8011850	HYD Oil Return Filter O-ring	1		0		0
	400504-00241	Pilot Filter Element	1		0		0
	400408-00049	Suction Filter	1				0
	S8011651	Suction Filter O-ring	1				0
	400406-01134	Urea Filter Service Kit	1			0	

Model	Part Number	Description	Q'ty	500 hr	1000 hr	1500 hr	2000 hr
				101529-01450	101529-01403	101529-01450	101529-01412
DX225LC-5	400508-00036	Engine Oil Filter	1	0	0	0	0
	400508-00062	Fuel Filter	1	0	0	0	0
	400403-00126	Fuel Filter Element	1	0	0	0	0
	400504-00254	Air Breather Filter Element	1		0		0
	974-00039	Air Filter, Inner	1		0		0
	974-00040	Air Filter, Outer	1		0		0
	400402-00076A	Aircon Filter	1				0
	400402-00077A	Aircon Filter	1				0
	400504-00045	Fuel Cap	1		0		0
	400504-00225	HYD Oil Return Filter Element	1		0		0
	S8011850	HYD Oil Return Filter O-ring	1		0		0
	400504-00241	Pilot Filter Element	1		0		0
	400408-00049	Suction Filter	1				0
	S8011651	Suction Filter O-ring	1				0
	400412-00003	Urea Filter Service Kit	1		0		0

Filter

DOOSAN Genuine Parts

PARTS LIST

Model	Part Number	Description	Q'ty	500 hr	1000 hr	1500 hr	2000 hr
				101529-01450	101529-01403	101529-01450	101529-01413
DX235LCR-5	400508-00036	Engine Oil Filter	1	0	0	0	0
	400508-00062	Fuel Filter	1	0	0	0	0
	400403-00126	Fuel Filter Element	1	0	0	0	0
	400504-00254	Air Breather Filter Element	1		0		0
	974-00039	Air Filter, Inner	1		0		0
	974-00040	Air Filter, Outer	1		0		0
	400402-00001	Aircon Filter	1				0
	400402-00041	Aircon Filter	1				0
	400504-00045	Fuel Cap	1		0		0
	400504-00225	HYD Oil Return Filter Element	1		0		0
	S8011850	HYD Oil Return Filter O-ring	1		0		0
	400504-00241	Pilot Filter Element	1		0		0
	400408-00049	Suction Filter	1				0
	S8011651	Suction Filter O-ring	1				0
	400412-00003	Urea Filter Service Kit	1		0		0

Model	Part Number	Description	Q'ty	500 hr	1000 hr	1500 hr	2000 hr
				101529-01451	101529-01404	101529-01451	101529-01414
DX300LC-5 (S/N: 1001~1038)	400504-00058	Engine Oil Filter	1	0	0	0	0
	400508-00062	Fuel Filter	1	0	0	0	0
	400504-00158	Fuel Filter Element	1	0	0	0	0
	400504-00217	Air Breather Filter Element	1		0		0
	474-00037	Air Filter Element, Inner	1		0		0
	474-00038	Air Filter Element, Outer	1		0		0
	400402-00076A	Aircon Filter	1				0
	400402-00077A	Aircon Filter	1				0
	400406-00689	Dosage Filter Kit	1		0		0
	400504-00045	Fuel Cap	1		0		0
	400504-00227	HYD Oil Return Filter Element	1		0		0
	S8012001	HYD Oil Return Filter O-ring	1		0		0
	400504-00188	Oil Element Cleaner Kit	1		0		0
	401002-00702	Oil Filter O-ring	1		0		0
	401002-00703	Oil Filter O-ring	1		0		0
	2474-9041S	Pilot Filter Element	1		0		0
	400408-00048	Suction Filter	1				0
	S8012200	Suction Filter O-ring	1				0
	400504-00125	Urea Tank Breather Element	1		0		0

PARTS LIST

Model	Part Number	Description	Q'ty	500 hr	1000 hr	1500 hr	2000 hr
				101529-01451	101529-01405	101529-01451	101529-01415
DX300LC-5 (S/N: 1039~1040)	400504-00058	Engine Oil Filter	1	0	0	0	0
	400508-00062	Fuel Filter	1	0	0	0	0
	400504-00158	Fuel Filter Element	1	0	0	0	0
	400504-00217	Air Breather Filter Element	1		0		0
	474-00037	Air Filter Element, Inner	1		0		0
	474-00038	Air Filter Element, Outer	1		0		0
	400402-00076A	Aircon Filter	1				0
	400402-00077A	Aircon Filter	1				0
	400406-00689	Dosage Filter Kit	1		0		0
	400504-00045	Fuel Cap	1		0		0
	400504-00227	HYD Oil Return Filter Element	1		0		0
	S8012001	HYD Oil Return Filter O-ring	1		0		0
	400504-00188	Oil Element Cleaner Kit	1		0		0
	401002-00702	Oil Filter O-ring	1		0		0
	401002-00703	Oil Filter O-ring	1		0		0
	400504-00241	Pilot Filter Element	1		0		0
	400408-00048	Suction Filter	1				0
	S8012200	Suction Filter O-ring	1				0
	400504-00125	Urea Tank Breather Element	1		0		0

Model	Part Number	Description	Q'ty	500 hr	1000 hr	1500 hr	2000 hr
				101529-01451	101529-01406	101529-01451	101529-01416
DX300LC-5 (S/N:1041~19999)	400504-00058	Engine Oil Filter	1	0	0	0	0
	400508-00062	Fuel Filter	1	0	0	0	0
	400504-00158	Fuel Filter Element	1	0	0	0	0
	400504-00254	Air Breather Filter Element	1		0		0
	474-00037	Air Filter Element, Inner	1		0		0
	474-00038	Air Filter Element, Outer	1		0		0
	400402-00076A	Aircon Filter	1				0
	400402-00077A	Aircon Filter	1				0
	400406-00689	Dosage Filter Kit	1		0		0
	400504-00045	Fuel Cap	1		0		0
	400504-00227	HYD Oil Return Filter Element	1		0		0
	S8012001	HYD Oil Return Filter O-ring	1		0		0
	400504-00188	Oil Element Cleaner Kit	1		0		0
	401002-00702	Oil Filter O-ring	1		0		0
	401002-00703	Oil Filter O-ring	1		0		0
	400504-00241	Pilot Filter Element	1		0		0
	400408-00048	Suction Filter	1				0
	S8012200	Suction Filter O-ring	1				0
	400504-00125	Urea Tank Breather Element	1		0		0

Filter

DOOSAN Genuine Parts

PARTS LIST

Model	Part Number	Description	Q'ty	500 hr	1000 hr	1500 hr	2000 hr
				101529-01452	101529-01407	101529-01452	101529-01417
DX300LC-5 (S/N: 20001~)	400508-00035	Engine Oil Filter	1	0	0	0	0
	400508-00063	Fuel Filter	1	0	0	0	0
	65.12503-5033A	Fuel Filter Element	1	0	0	0	0
	400504-00254	Air Breather Filter Element	1		0		0
	474-00037	Air Filter Element, Inner	1		0		0
	474-00038	Air Filter Element, Outer	1		0		0
	400402-00076A	Aircon Filter	1				0
	400402-00077A	Aircon Filter	1				0
	400504-00045	Fuel Cap	1		0		0
	400504-00227	HYD Oil Return Filter Element	1		0		0
	S8012001	HYD Oil Return Filter O-ring	1		0		0
	400504-00241	Pilot Filter Element	1		0		0
	400408-00048	Suction Filter	1				0
	S8012200	Suction Filter O-ring	1				0
	400412-00003	Urea Filter Service Kit	1		0		0

Model	Part Number	Description	Q'ty	500 hr	1000 hr	1500 hr	2000 hr
				101529-01451	101529-01466	101529-01451	101529-01471
DX340LC-5 (S/N: 10001~10034)	400504-00058	Engine Oil Filter	1	0	0	0	0
	400508-00062	Fuel Filter	1	0	0	0	0
	400504-00158	Fuel Filter Element	1	0	0	0	0
	400504-00217	Air Breather Filter Element	1		0		0
	474-00037	Air Filter Element, Inner	1		0		0
	474-00038	Air Filter Element, Outer	1		0		0
	400402-00076A	Aircon Filter	1				0
	400402-00077A	Aircon Filter	1				0
	400406-01303	Dosage Filter Kit	1		0		0
	400504-00045	Fuel Cap	1		0		0
	400504-00225	HYD Oil Return Filter Element	1		0		0
	S8011850	HYD Oil Return Filter O-ring	1		0		0
	400504-00188	Oil Element Cleaner Kit	1		0		0
	401002-00702	Oil Filter O-ring	1		0		0
	401002-00703	Oil Filter O-ring	1		0		0
	2474-9041S	Pilot Filter Element	1		0		0
	400408-00048	Suction Filter	1				0
	S8012200	Suction Filter O-ring	1				0
	400504-00125	Urea Tank Breather Element	1		0		0

PARTS LIST

Model	Part Number	Description	Q'ty	500 hr	1000 hr	1500 hr	2000 hr
				101529-01451	101529-01467	101529-01451	101529-01472
DX340LC-5 (S/N: 10035~10049)	400504-00058	Engine Oil Filter	1	0	0	0	0
	400508-00062	Fuel Filter	1	0	0	0	0
	400504-00158	Fuel Filter Element	1	0	0	0	0
	400504-00217	Air Breather Filter Element	1		0		0
	474-00037	Air Filter Element, Inner	1		0		0
	474-00038	Air Filter Element, Outer	1		0		0
	400402-00076A	Aircon Filter	1				0
	400402-00077A	Aircon Filter	1				0
	400406-01303	Dosage Filter Kit	1		0		0
	400504-00045	Fuel Cap	1		0		0
	400504-00225	HYD Oil Return Filter Element	1		0		0
	S8011850	HYD Oil Return Filter O-ring	1		0		0
	400504-00188	Oil Element Cleaner Kit	1		0		0
	401002-00702	Oil Filter O-ring	1		0		0
	401002-00703	Oil Filter O-ring	1		0		0
	400504-00241	Pilot Filter Element	1		0		0
	400408-00048	Suction Filter	1				0
	S8012200	Suction Filter O-ring	1				0
	400504-00125	Urea Tank Breather Element	1		0		0

Model	Part Number	Description	Q'ty	500 hr	1000 hr	1500 hr	2000 hr
				101529-01451	101529-01468	101529-01451	101529-01473
DX340LC-5 (S/N: 10050~19999)	400504-00058	Engine Oil Filter	1	0	0	0	0
	400508-00062	Fuel Filter	1	0	0	0	0
	400504-00158	Fuel Filter Element	1	0	0	0	0
	400504-00254	Air Breather Filter Element	1		0		0
	474-00037	Air Filter Element, Inner	1		0		0
	474-00038	Air Filter Element, Outer	1		0		0
	400402-00076A	Aircon Filter	1				0
	400402-00077A	Aircon Filter	1				0
	400406-01303	Dosage Filter Kit	1		0		0
	400504-00045	Fuel Cap	1		0		0
	400504-00225	HYD Oil Return Filter Element	1		0		0
	S8011850	HYD Oil Return Filter O-ring	1		0		0
	400504-00188	Oil Element Cleaner Kit	1		0		0
	401002-00702	Oil Filter O-ring	1		0		0
	401002-00703	Oil Filter O-ring	1		0		0
	400504-00241	Pilot Filter Element	1		0		0
	400408-00048	Suction Filter	1				0
	S8012200	Suction Filter O-ring	1				0
	400504-00125	Urea Tank Breather Element	1		0		0

Filter

DOOSAN Genuine Parts

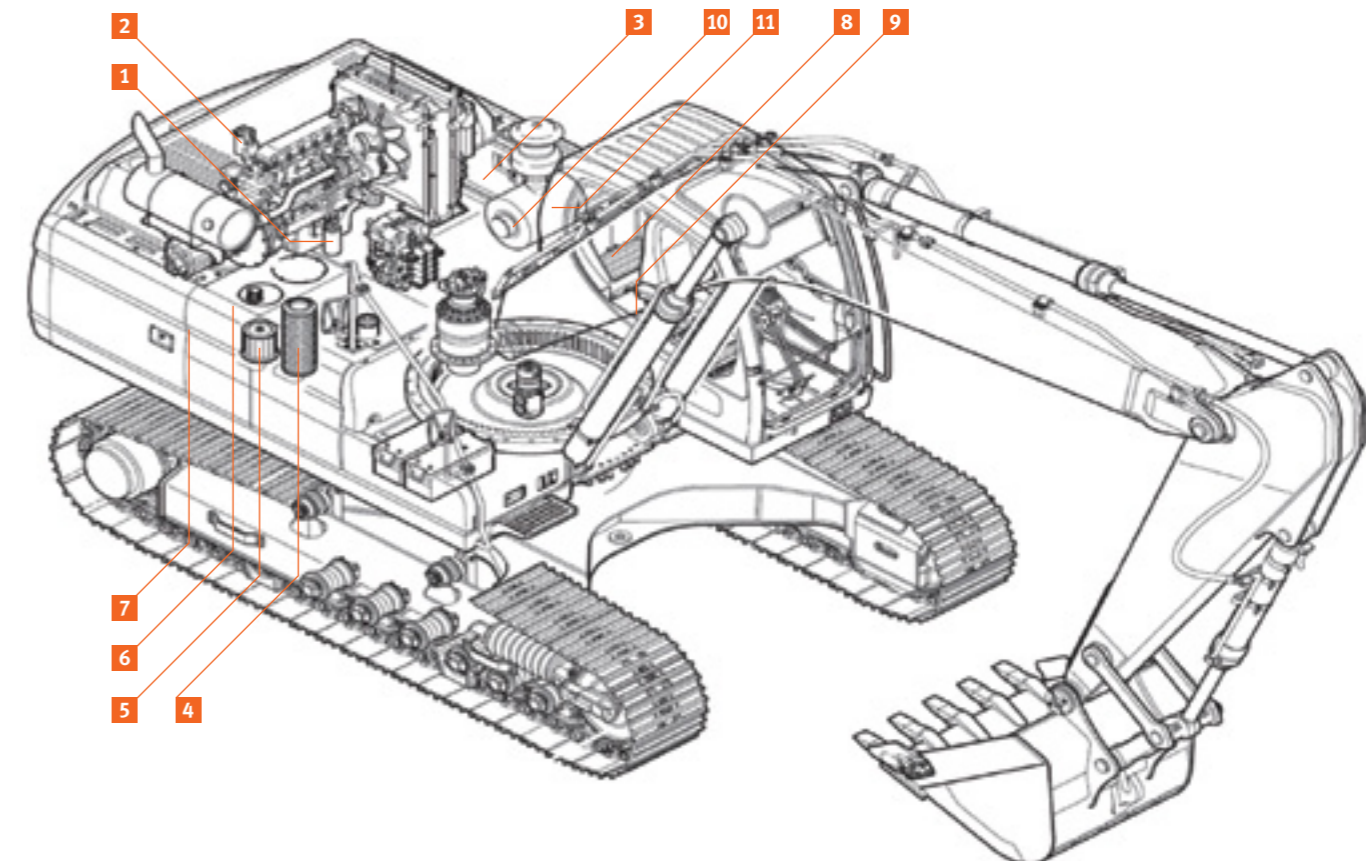
PARTS LIST

Model	Part Number	Description	Q'ty	500 hr	1000 hr	1500 hr	2000 hr
				101529-01452	101529-01469	101529-01452	101529-01474
DX340LC-5 (S/N: 20001~)	400508-00035	Engine Oil Filter	1	0	0	0	0
	400508-00063	Fuel Filter	1	0	0	0	0
	65.12503-5033A	Fuel Filter Element	1	0	0	0	0
	400504-00254	Air Breather Filter Element	1		0		0
	474-00037	Air Filter Element, Inner	1		0		0
	474-00038	Air Filter Element, Outer	1		0		0
	400402-00076A	Aircon Filter	1				0
	400402-00077A	Aircon Filter	1				0
	400504-00045	Fuel Cap	1		0		0
	400504-00225	HYD Oil Return Filter Element	1		0		0
	S8011850	HYD Oil Return Filter O-ring	1		0		0
	400504-00241	Pilot Filter Element	1		0		0
	400408-00048	Suction Filter	1				0
	S8012200	Suction Filter O-ring	1				0
	400412-00003	Urea Filter Service Kit	1		0		0

Model	Part Number	Description	Q'ty	500 hr	1000 hr	1500 hr	2000 hr
				101529-01451	101529-01470	101529-01451	101529-01475
DX380LC-5	400504-00058	Engine Oil Filter	1	0	0	0	0
	400508-00062	Fuel Filter	1	0	0	0	0
	400504-00158	Fuel Filter Element	1	0	0	0	0
	400504-00254	Air Breather Filter Element	1		0		0
	474-00037	Air Filter Element, Inner	1		0		0
	474-00038	Air Filter Element, Outer	1		0		0
	400402-00076A	Aircon Filter	1				0
	400402-00077A	Aircon Filter	1				0
	400406-01303	Dosage Filter Kit	1		0		0
	400504-00045	Fuel Cap	1		0		0
	400504-00225	HYD Oil Return Filter Element	1		0		0
	S8011850	HYD Oil Return Filter O-ring	1		0		0
	400504-00188	Oil Element Cleaner Kit	1		0		0
	401002-00702	Oil Filter O-ring	1		0		0
	401002-00703	Oil Filter O-ring	1		0		0
	400504-00241	Pilot Filter Element	1		0		0
	400408-00048	Suction Filter	1				0
	S8012200	Suction Filter O-ring	1				0
	400504-00125	Urea Tank Breather Element	1		0		0

FILTER LIST BY MODEL

1. Engine Oil Filter
2. Fuel Filter
3. Pre Fuel Filter
4. Hyd Oil Return Filter
5. Suction Filter
6. Air Breather Filter
7. Pilot Filter
8. Aircon Filter, Outer
9. Aircon Filter, Inner
10. Air Filter, Inner
11. Air Filter, Outer



Doosan Infracore Construction Equipment

Aftermarket Sales Reference Book

Oil

DOOSAN Genuine Parts



Oil

Oil

DOOSAN Genuine Parts

Doosan Genuine Oil offers the highest quality and reliability

Unlike general lubricants made by oil manufacturer, Doosan Genuine Oil Products are designed and developed differently through its certified Lab Test, Bench Test and Field Test from the initial manufacturing stage in order to deliver the very best level of performance and meet all the requirements of Doosan equipment.

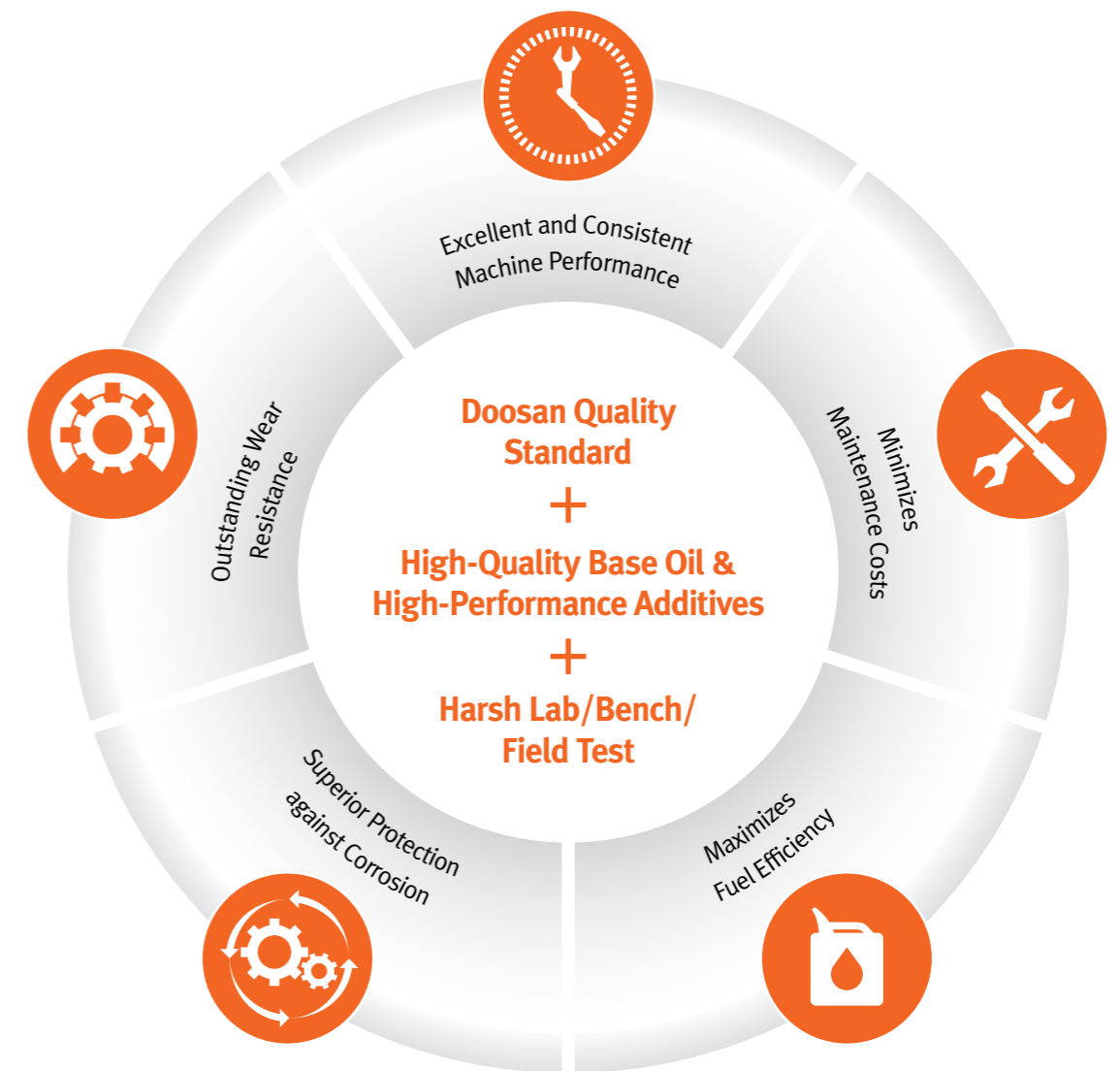
- RELIABLE SOLUTIONS**
- Better detergency to minimize fouling
 - Suitable with very low sulfur (10 ppm) and also high sulfur (50 ppm) content fuels
 - Designed to fully meet the requirement of engines fitted with EGR (Exhaust Gas Recirculation) Valve to reduce emission of Nox (Nitrogen Oxides)



Item	Description	20 L	210 L	1000 L
Engine Oil	Doosan Engine Power SAE 10W/30	941-00900B	941-00901C	914-00902D
	Doosan Engine Power SAE 15W/40	941-00904B	941-00905C	941-00906D
	Doosan Ultra Engine Power SAE 10W/30	941-00907B	941-00908C	941-00909D
	Doosan Ultra Engine Power SAE 15W/40	941-00910B	941-00911C	941-00912D
Hydraulic / Hydrostatic Oil	Doosan Hydraulic Power VG46	941-00800B	941-00801C	941-00802D
	Doosan Hydraulic Premium (4000 hr) VG46	TBD	TBD	
Coolant / Antifreeze	Doosan EG Coolant	941-00599B	941-00600C	
	Doosan Trax Oil	941-00700B	941-00701C	
Axle / Transmission Oil	Doosan TM Transmission SAE 10W	941-00502B	941-00503C	
	Doosan Drive LS Transmission W90LS SAE 80W90	941-00504B	941-00501C	

Item	Description	400 g X 24	18 Kg	50 Kg
Grease	Doosan Multi-Purpose Grease	941-00656	941-00655	941-00657

THE BEST CHOICE FOR PRODUCTIVITY AND PROFITABILITY

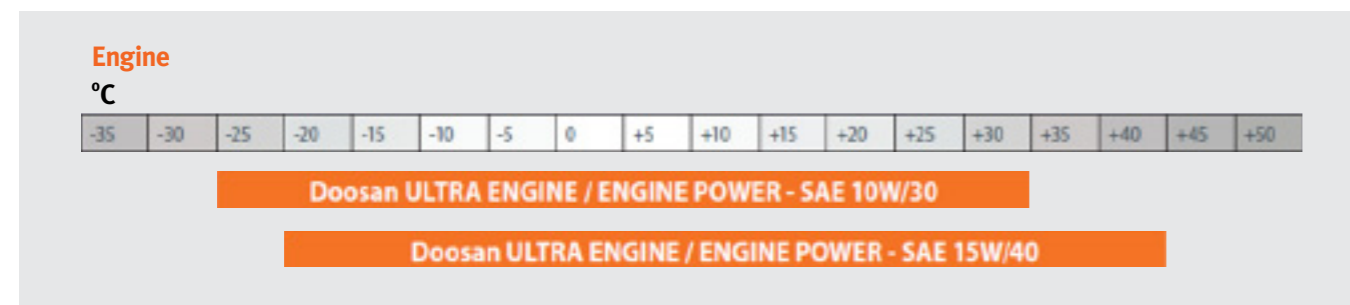


Oil

DOOSAN Genuine Parts

DOOSAN GENUINE ENGINE OIL

New generation high performance Diesel lubricants. Excellent soot control and oxidation resistance. Designed and recommended for all Doosan equipment. Satisfies the highest American (API) and European (ACEA) specifications.



DOOSAN ENGINE POWER SAE 10W/30



- Synthetic based
- Provided superior lubrication at low temperature start-ups (-25°C)
- All-season protection
- Best protection for new and older engines, not equipped with emission reduction systems, such as DPF
- Low evaporability, fewer top-ups required
- Also suitable for petrol engines
- Excellent dispersion, minimizing the formation of sludge and deposits

Description	Volume	Part Number
Doosan Engine Power SAE 10W/30	20 L	941-00900B
	210 L	941-00901C
	1000 L	914-00902D

International Standard:
 API CI-4
 ACEA E7

DOOSAN ENGINE POWER SAE 15W/40



- All-season protection
- Best protection for new and older engines, not equipped with emission reduction systems, such as DPF
- Low evaporability, fewer top-ups required
- Also suitable for petrol engines
- Excellent dispersion, minimizing the formation of sludge and deposits

Description	Volume	Part Number
Doosan Engine Power SAE 15W/40	20 L	941-00904B
	210 L	941-00905C
	1000 L	941-00906D

International Standard:
 API CI-4
 ACEA E7

DOOSAN ULTRA ENGINE POWER SAE 10W/30



Description	Volume	Part Number
Doosan Ultra Engine Power SAE 10W/30	20 L	941-00907B
	210 L	941-00908C
	1000 L	941-00909D

International Standard:
 API CJ-4
 ACEA E9/E7

- Lower SAPS oil
- Synthetic based
- Provides superior lubrication at low temperature startups (-25°C)
- All-season protection
- Best protection for new and older engines
- Low evaporability, fewer top-ups required
- Also suitable for petrol engines
- Excellent dispersion, minimizing the formation of sludge and deposits
- Certified enhanced lifetime of the emission control systems

DOOSAN ULTRA ENGINE POWER SAE 15W/40



Description	Volume	Part Number
Doosan Ultra Engine Power SAE 15W/40	20 L	941-00910B
	210 L	941-00911C
	1000 L	941-00912D

International Standard:
 API CJ-4
 ACEA E9/E7

- Lower SAPS oil
- All-season protection
- Best protection for new and older engines
- Low evaporability, fewer top-ups required
- Also suitable for petrol engines
- Excellent dispersion, minimizing the formation of sludge and deposits
- Certified enhanced lifetime of the emission control systems



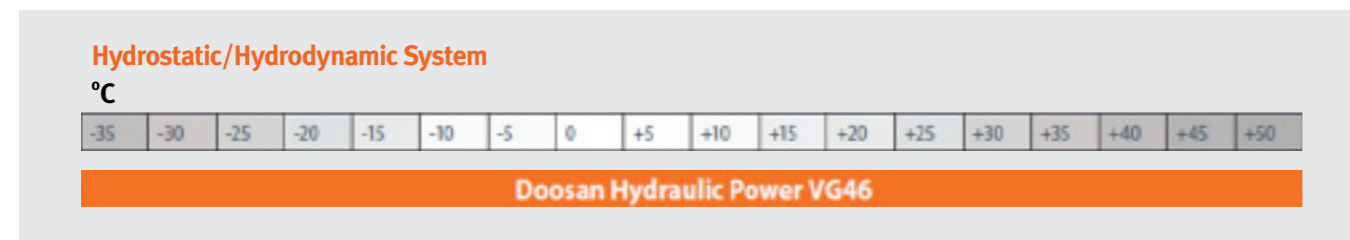
For Doosan Ultra Engine Power, the latest additive technology is used to protect under the most severe engine conditions found in modern low-emission engines. The oils are designed to provide optimal protection that adapts to the driving conditions resulting in improved soot handling, wear protection and resistance to breakdown under high temperature. The low-ash formulation helps protect the exhaust catalyst and particle filters as used on the latest low-emission vehicles. It makes the oil suitable for the most modern low-emission heavy-duty engines.

Oil

DOOSAN Genuine Parts

DOOSAN GENUINE HYDRAULIC / HYDROSTATIC OIL

Special all-season high performance synthetic based lubricants for hydraulic/hydrostatic systems. Designed and recommended for all Doosan equipment.



DOOSAN HYDRAULIC POWER VG46

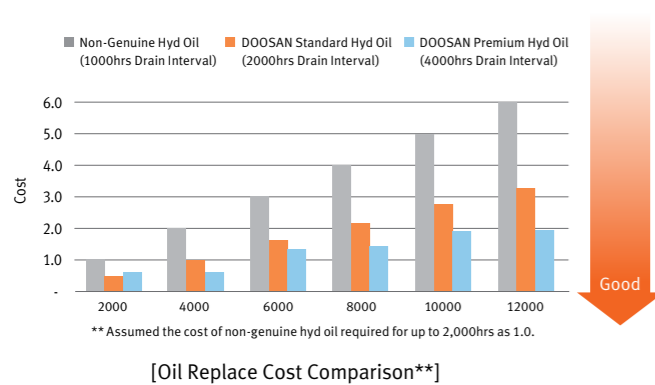


- High filterability: very significant reduction of filter plugging phenomena
- Synthetic based
- Maintains superior performance under extreme operating conditions
- Excellent thermal stability
- Very low deposit formation
- Excellent pumpability/start-ups at low temperatures
- Very high anti-wear properties
- Keeps the system clean
- Excellent water separability

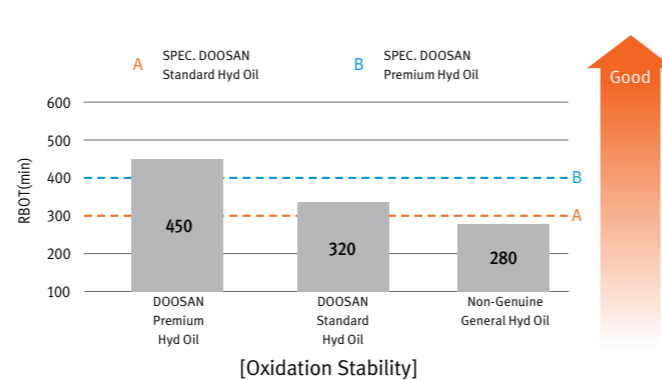
Description	Volume	Part Number
Doosan Hydraulic Power VG46	20 L	941-00800B
	210 L	941-00801C
	1000 L	941-00802D

Performance Level:
 DIN 51524 Part 3 HVLP

OIL REPLACE COST COMPARISON



OXIDATION STABILITY



Lifetime of Doosan Genuine Hydraulic / Hydrostatic Oil is guaranteed under condition of 100% use of same Doosan Genuine Oil and contamination control of the oil.

DOOSAN GENUINE COOLANT / ANTIFREEZE



DOOSAN EG COOLANT

Description	Volume	Part Number
Doosan EG Coolant	20 L	941-00599B
	210 L	941-00600C

- Ready to use
- Ethylene glycol based antifreeze/coolant. Freezing protection -36°C
- Free of silicate, borate, amine, nitrate and phosphate
- High durability / protection (up to 4000 hrs / 5 years), specific for cooling systems and in particular for aluminum radiators
- Ready to use, pre-mixed with deionised water

DOOSAN GENUINE GREASE



DOOSAN MULTI-PURPOSE GREASE NLGI 2

Description	Volume	Part Number
Doosan Multi-Purpose Grease	400 g X 24	941-00656
	18 Kg	941-00655
	50 Kg	941-00657

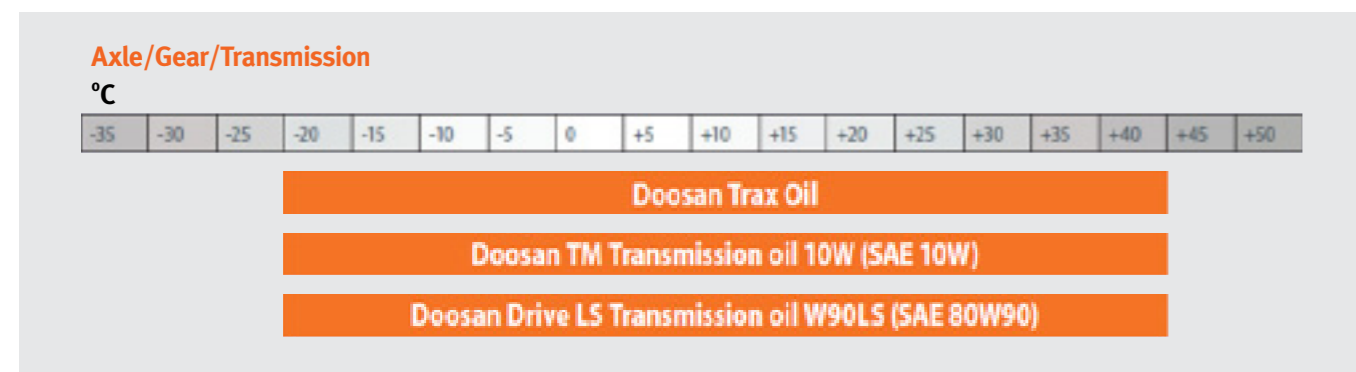
Drop Point : 260°C
 Color : Green
 NLGI No.2

- High performance lithium grease
- Formulated with high quality base oils and anti-wear additives
- Excellent rust and corrosion protection for prolonged equipment life
- Designed for routine and moderately loaded applications. Daily regreasing required
- Formulated protection in wet conditions and under moderate shock loads

Oil

DOOSAN Genuine Parts

DOOSAN GENUINE AXLE / GEAR / TRANSMISSION OIL



DOOSAN TRAX OIL

- Superior anti-squawk/noise and anti-stick-slip properties
- Special friction modifiers combined with a balanced and precise blend of other components
- Suitable for a wide range of friction disc materials (graphite, paper, sintered materials, etc)
- Longer maintenance intervals
- High thermal resistance
- UTTO = Universal Tractor Transmission Oil

Description	Volume	Part Number
Doosan Trax Oil	20 L	941-00700B
	210 L	941-00701C

Performance Level:
 API GL-4 Low speed/High torque
 ZF TE-ML 03E / 05F / 17E / 21F

AXLE / GEAR / TRANSMISSION OIL BY MODEL

Model	Swing & Travel Device	Axle	Transmission
CEX-5			
DX140LC-5 ~ DX530LC-5	3		
WEX-5			
DX140W-5 ~ DX210W-5	3	3	2
DX57W-5	3	3	3
WLO-5			
DL200-5		3	
DL220-5 ~ DL420-5		1	2
DL420-5 CVT		1	1
DL450-5 ~ DL580-5		1	2

1. Doosan Trax Oil
2. Doosan TM Transmission SAE 10W
3. Doosan Drive LS Transmission W90LS SAE80W90



DOOSAN TM TRANSMISSION SAE 10W

Description	Volume	Part Number
Doosan TM Transmission SAE 10W	20 L	941-00502B
	210 L	941-00503C

Performance Level:
 ZF TE-ML 03C / 07F

- Reduced gear wear
- Improved friction control
- Longer life for transmissions and brakes
- Less brake noise and increased rim pull
- Excellent low temperature fluidity
- Excellent control of oxidation and sludge provide longer drain intervals
- Excellent shear stability
- Maximum foam protection

Lubricant especially developed for transmissions, wet brakes and final drives of off-road equipment.



DOOSAN DRIVE LS TRANSMISSION W90LS SAE 80W90

Description	Volume	Part Number
Doosan Drive LS Transmission W90LS SAE 80W90	20 L	941-00504B
	210 L	941-00501C

Performance Level:
 API GL-5
 ZF TE-ML 05C / 12C / 21C

- Characteristics of Extreme Pressure
- Gear protection formulation
- Anti-foam properties
- High 'limited slip' properties

Axles fluid with or without hypoid gears with specific features of EP (Extreme Pressure). Specially formulated for normal and self-locking differentials with limited slip systems.

Doosan Infracore Construction Equipment

Aftermarket Sales Reference Book

GET

DOOSAN Genuine Parts



GET
Tooth Pin Master

GET

DOOSAN Genuine Parts

The DOOSAN GET system will bring you superior productivity and profitability

- FEATURES & BENEFITS**
- Application-centered, robust design conceived by DOOSAN.
 - Superior heat treatment and rigorous quality control system.
 - High abrasion resistance material used for extra durability (HD/XD).

DOOSAN GET PORTFOLIO (HYDRAULIC EXCAVATOR)



1. GD(General Duty) Tooth
2. HD(Heavy Duty) Tooth
3. SD(Severe Duty) Tooth
4. WRM(Wear Resistance Material) Tooth

DOOSAN GET PORTFOLIO (WHEEL LOADER)

ADAPTER

1. Bolt-on
2. Weld-on



TOOTH

1. Monoblock
2. General Duty
3. General Abrasive
4. Abrasive Extra Life
5. Rock Abrasive Long Life



GET

DOOSAN Genuine Parts

GD(GENERAL DUTY) TOOTH

Optimized design for DOOSAN's GP and the new General Construction bucket. Suitable for machines weighing from 14 to 70 tons. Recommended for general construction and utility loading applications.



KEY CHARACTERISTICS

1. Designed to maintain a uniform wear pattern throughout the entire lifespan.
2. - Highly suitable for ground leveling.
 - Better digging action due to application of grooves on both sides.
 - Ideal for clean-out/utility work.



Carrier weight	Adapter Part No.	Tooth				Side cutter						
		Teeth IC #	Part No	Length (mm)	Weight (kg)	Pin	Washer	RH	LH	Bolt	Nut	Washer
5ton	K9004292	1	230111-00079	136	1.10		2705-9005ST	101514-00008	101514-00009	S0565266	S4012933	S5102906
8ton	430203-00015	2	230111-00022	176	2.20		2705-9016 2705-9008A	101514-00012	101514-00013	S0570166	S4013136	2114-9012A
14~17ton	K9005348	3	K9005347	195	3.19		2705-1022ST	101514-00004	101514-00005	S0574565	S4013346	2114-1831A
18~25ton	K9005350	4	K9005349	216	4.90		2705-1020ST	101514-00002	101514-00003	S0574861	S4013346	2114-1831A
30ton	K9005352	5	K9005351	240	7.50		2705-1021ST	101514-00006	101514-00007	S0574763	S4013346	2114-1831A
34~38ton	430203-00016	6	230111-00023	270	9.27		705-00006 114-00246	101514-00006	101514-00007	S0574763	S4013346	2114-1831A
42ton	K9005354	7	K9005353	300	14.10		2705-1034 2114-1931	2713-1240	2713-1241	S0574965	S4013346	2114-1831A
50ton	K9005354	7	K9005353	300	14.10		2705-1034 2114-1931	2713-1240	2713-1241	S0574965	S4013346	2114-1831A

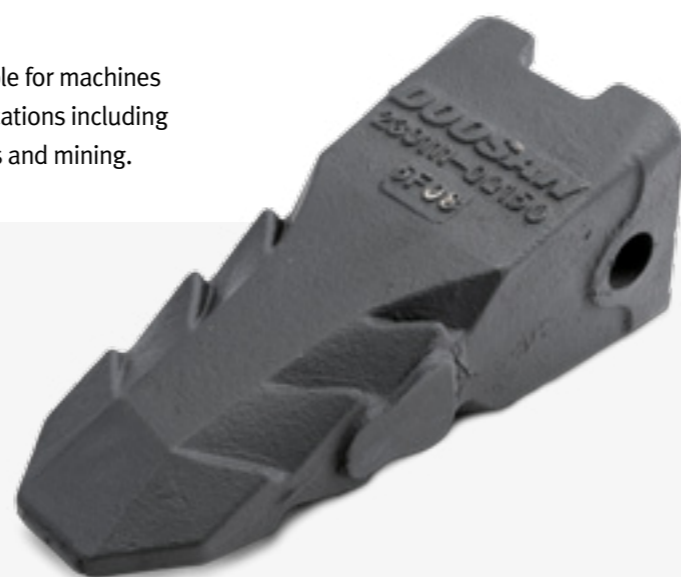
Tooth IC (Tooth Interchangeability Code) – Tooth with the same IC code can be replaced with each other.
 (i.e. The adapter for a 34t Excavator, 430203-00036, can use teeth whose IC number is 6 (either 230111-00092 (HD tooth) or 230111-00104 (SD tooth)).

GET

DOOSAN Genuine Parts

HD(HEAVY DUTY) TOOTH

Optimized design for the Heavy Construction bucket. Suitable for machines weighing from 14 to 70 tons. Recommended for most applications including excavating, trenching, loading and medium-density quarries and mining.



KEY CHARACTERISTICS

1. - Center-convex and corn shape.
 - Thicker front-end and greater work volume.
2. Self-sharpening design for minimal unnecessary contact with materials.



Carrier weight	Adapter Part No.	Tooth					Side cutter					
		Teeth IC #	Part No	Length (mm)	Weight (kg)	Pin	Washer	RH (1)	LH(1)	Bolt	Nut	Washer
14~17ton	430203-00022	3	230111-00089	217	4.17			101514-00041	101514-00047	S0574565	S4013346	2114-1831A
18ton	430203-00067	4	230111-00150	243	6.50			101514-00041	101514-00047	S0574861	S4013346	2114-1831A
22~25ton	430203-00067	4	230111-00150	243	6.50			101514-00054	101514-00055	S0574861	S4013346	2114-1831A
30ton	430203-00024	5	230111-00090	270	8.50			101514-00056	101514-00057	S0574763	S4013346	2114-1831A
34~38ton	430203-00036	6	230111-00092	315	12.27	705-00006	114-00246	101514-00056	101514-00057	S0574763	S4013346	2114-1831A
42ton	430203-00036	6	230111-00092	315	12.27	705-00006	114-00246	101514-00051	101514-00052	S0574965	S4013346	2114-1831A
50ton	430203-00037	7	230111-00093	361	19.87	2705-1034	2114-1931	101514-00051	101514-00052	S0574965	S4013346	2114-1831A
70ton	430203-00038	8	230111-00094	390	24.80	K1052231	K1052892					

Tooth IC (Tooth Interchangeability Code) – Tooth with the same IC code can be replaced with each other.
 (i.e. The adapter for a 34t Excavator, 430203-00036, can use teeth whose IC number is 6 (either 230111-00092 (HD tooth) or 230111-00104 (SD tooth)).

GET

DOOSAN Genuine Parts

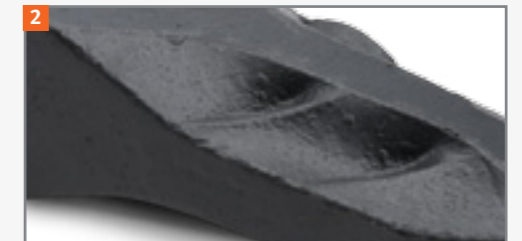
SD(SEVERE DUTY) TOOTH

Optimized design for the Severe Mining bucket and the Xtreme Mining bucket. Suitable for machines weighing 22 to 70 tons. Recommended for extremely tough quarries and mining applications.



KEY CHARACTERISTICS

- Higher center-convex and rounded shape.
 - Thickest front-end for maximum lifespan during rock abrasion.
- Self-sharpening design delivers better penetration throughout the entire product lifespan.



Carrier weight	Adapter Part No.	Tooth				Side cutter						
		Teeth IC #	Part No	Length (mm)	Weight (kg)	Pin	Washer	Protector (4)	Guide (4)	Bolt (8)	Nut(8)	Washer(8)
18~25ton	430203-00049	5	230111-00124	275	9.39	2705-1021ST		111003-00062	250102-00525	S0574861	S4013346	2114-1831A
30ton	430203-00036	6	230111-00104	325	14.09	705-00006	114-00246	111003-00063	250102-00528	S0574961	S4013333	2114-1831A
34~38ton	430203-00037	7	230111-00106	365	20.44	2705-1034	2114-1931	111003-00063	250102-00528	S0574961	S4013333	2114-1831A
42ton	430203-00037	7	230111-00106	365	20.44	2705-1034	2114-1931	111003-00050	250102-00529	S0575061	S4013333	2114-1831A
50ton	430203-00037	7	230111-00106	365	20.44	2705-1034	2114-1931	111003-00050	250102-00529	S0575061	S4013333	2114-1831A
70ton	430203-00038	8	230111-00107	400	28.86	K1052231	K1052892	111003-00051	250102-00530	S0575366	S4013333	2114-1831A

Tooth IC (Tooth Interchangeability Code) – Tooth with the same IC code can be replaced with each other.
 (i.e. The adapter for a 34t Excavator, 430203-00036, can use teeth whose IC number is 6 (either 230111-00092 (HD tooth) or 230111-00104 (SD tooth)).

GET

DOOSAN Genuine Parts

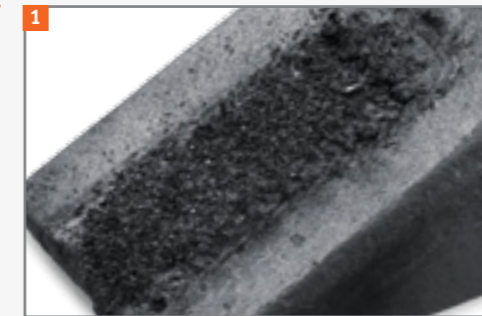
WRM(WEAR RESISTANCE MATERIAL) TOOTH

Optimized design for high abrasiveness application for a longer wear life. Suitable for machines weighing from 14 to 50 tons.



KEY CHARACTERISTICS

1. The Wear Resistance Material is a model for tungsten carbide welded on the load contact section to maximize resistance to wear.



Carrier weight	Adapter		Tooth				Side cutter					
	Part No.	Teeth IC #	Part No	Length (mm)	Weight (kg)	Pin	Washer	RH	LH	Bolt	Nut	Washer
14~17ton	K9005348	3	230111-00028	195	4.04	2705-1022ST		101514-00004	101514-00005	S0574565	S4013346	2114-1831A
18~25ton	K9005350	4	230111-00029	216	5.74	2705-1020ST		101514-00002	101514-00003	S0574861	S4013346	2114-1831A
30ton	K9005352	5	230111-00030	240	7.76	2705-1021ST		101514-00006	101514-00007	S0574763	S4013346	2114-1831A
34~38ton	430203-00016	6	230111-00032	270	10.40	705-00006	114-00246	101514-00006	101514-00007	S0574763	S4013346	2114-1831A
42ton	K9005354	7	230111-00031	300	17.29	2705-1034	2114-1931	2713-1240	2713-1241	S0574965	S4013346	2114-1831A
50ton	K9005354	7	230111-00031	300	17.29	2705-1034	2114-1931	2713-1240	2713-1241	S0574965	S4013346	2114-1831A

Tooth IC (Tooth Interchangeability Code) – Tooth with the same IC code can be replaced with each other.
 (i.e. The adapter for a 34t Excavator, 430203-00036, can use teeth whose IC number is 6 (either 230111-00092 (HD tooth) or 230111-00104 (SD tooth)).

GET

DOOSAN Genuine Parts

DOOSAN GET PORTFOLIO (WHEEL LOADER)



AS - IS

Classification		DL200 / DL250	DL300 / DL350	DL420 / DL450 / DL500 / DL550	
Adapter	General Purpose		K1003612A	K1003612A	
	WRM (Wear Resistance Material)			430203-00012	
	Rock			2713-1220A	
Tooth Option	Monoblock	Center	4713-4004B	2983-342M92B	4713-1130E
		RH	4713-4005B	4713-1116B	4713-1130E
		LH	4713-4006B	4713-1117B	4713-1130E
	General Purpose			K1039299A	K1039299A
	WRM (Wear Resistance Material)				230111-00026
	Rock				K1039299A
Others	Bolt	S0565466	S0534466	S0534466	
	Nut	S4012933	S4013343	S4013343	

TO - BE

Classification		DL200 / DL250	DL300 / DL350	DL420 / DL450 / DL500 / DL550
Adapter	Universal Bolt-On	*TBD (New)	430203-00059A (NEW)	430203-00059A (New)
	Universal Weld-On			430203-00070 (New)
Tooth Option	Monoblock	*TBD (New)	430203-00071 (New)	430203-00071 (New)
	General Duty		Deleted	230111-00090 (New)
	General Abrasive (GA)	*TBD (New)	230111-00142A (New)	230111-00142A (New)
	Abrasive Extra Life (AEL)			230111-00144 (New)
	Rock Abrasive Long life			230111-00172 (New)
Others	Bolt	S0565466	S0534466	S0534466
	Nut	S4012933	S4013343	S4013343

GET

DOOSAN Genuine Parts

TOOTH PIN MASTER

Parts Number : 860104-00366



1. Removal of locking washer (retainer)

- Spin out the adapter(F) and insert the short pin(E) onto pin hole.
- Hammer the head(A) until the locking retainer is removed from the pin hole.

2. Removal of pin and worn out tooth

- Place the long pin(G) into the pin hole and hammer the head(A) until the locking pin is removed from the pin hole and remove the tooth from the adapter.

3. Installation of a new tooth

- Clean out an adapter before installing the new tooth.
- Insert the new tooth onto the adapter and the lock pin and washer into it.
- Place the adapter(F) on the locking pin and supporter(D) on the nearest old tooth.
- Hammer the head(A) until the pin is fully inserted.



Doosan Infracore Construction Equipment

Aftermarket Sales Reference Book

Undercarriage

DOOSAN Genuine Parts



Undercarriage

Undercarriage

DOOSAN Genuine Parts

UNDERCARRIAGE

The maximum possible wear life is designed for DOOSAN machine.

The undercarriage accounts for a large portion of your total machine operating costs. It is essential to select the right undercarriage to maximize your productivity and profitability.



- FEATURES & BENEFITS**
- Great wear resistance and durability.
 - Consistent product quality & reliability.
 - Excellent surface and core hardness provide longer wear life, lowering cost per hour.

UC MAJOR COMPONENTS BY MODEL

Model	Classification	Part No.	Description	Q'ty/Mac.
DX140LC-3 DX140LC-5 / DX160LC-5	Idler Assy	K1018457A	IDLER,TRACK	2
	Sprocket	200108-00016A	SPROCKET	2
	Upper Roller	200105-00016A	ROLLER,UPPER	2
	Lower Roller	200104-00028A	ROLLER,LOWER	14
DX140LCR-3 DX140LCR-5	Idler Assy	K1033976	IDLER,TRACK	2
	Sprocket	200108-00016A	SPROCKET	2
	Upper Roller	200105-00016A	ROLLER,UPPER	2
	Lower Roller	200104-00028A	ROLLER,LOWER	14
DX160LC-3 DX180LC-5	Idler Assy	200102-00049A	IDLER,TRACK	2
	Sprocket	200108-00017A	SPROCKET	2
	Upper Roller	200105-00017B	ROLLER,UPPER	4
	Lower Roller	200104-00030B	ROLLER,LOWER	14
DX225LC-3	Idler Assy	200102-00022B	IDLER,TRACK	2
	Sprocket	200108-00008A	SPROCKET	2
	Upper Roller	200105-00038	ROLLER,UPPER	4
	Lower Roller	200104-00012B	ROLLER,LOWER	16

Model	Classification	Part No.	Description	Q'ty/Mac.
DX225LC-5	Idler Assy	200102-00022B	IDLER,TRACK	2
	Sprocket	200108-00008A	SPROCKET	2
	Upper Roller	200105-00038 (S/N: 1001-1261)	ROLLER,UPPER	4
		200105-00022A (S/N: 1262-1272)	ROLLER,UPPER	4
		200105-00068 (S/N: 1273-)	ROLLER,UPPER	4
Lower Roller	200104-00012B	ROLLER,LOWER	16	
DX235LCR-5	Idler Assy	200102-00022B	IDLER,TRACK	2
	Sprocket	200108-00008A	SPROCKET	2
	Upper Roller	200105-00038 (S/N: 1001-1321)	ROLLER,UPPER	4
		200105-00068 (S/N: 1322-)	ROLLER,UPPER	4
	Lower Roller	200104-00012B (S/N: 1001-1321) 200104-00012B (S/N: 1322-)	ROLLER,LOWER	18 16
DX235NLC-5	Idler Assy	200102-00022B	IDLER,TRACK	2
	Sprocket	200108-00018	SPROCKET	2
	Upper Roller	200105-00038 (S/N: 1001-1127)	ROLLER,UPPER	4
		200105-00022A (S/N: 1128-1154)	ROLLER,UPPER	4
		200105-00068 (S/N: 1155-)	ROLLER,UPPER	4
Lower Roller	200104-00012B	ROLLER,LOWER	16	
DX255LC-3 DX255LC-5	Idler Assy	200102-00046A	IDLER,TRACK	2
	Sprocket	200108-00019A	SPROCKET	2
	Upper Roller	200105-00039	ROLLER,UPPER	4
DX300LC-5	Lower Roller	200104-00029A	ROLLER,LOWER	20
	Idler Assy	200102-00001A	IDLER,TRACK	2
	Sprocket	200108-00002A	SPROCKET	2
	Upper Roller	200105-00003B	ROLLER,UPPER	4
DX340LC-3	Lower Roller	200104-00001B (S/N: 1001-1524/ 10001-10249/ 20001-20116/ 30001-30064)	ROLLER,UPPER	18
	Lower Roller	200104-00001C (S/N: 1525-/10250- / 20117-/30065-)	ROLLER,LOWER	18
	Idler Assy	200102-00001A	IDLER,TRACK	2
	Sprocket	200108-00006A	SPROCKET	2
DX340LC-5	Upper Roller	200105-00003B	ROLLER,UPPER	4
	Lower Roller	200104-00001B	ROLLER,LOWER	18
	Lower Roller	200104-00001B (S/N: 10001-)	ROLLER,LOWER	18
	Lower Roller	200104-00001C (S/N: 20001-)	ROLLER,LOWER	18
DX380LC-3 DX380LC-5	Idler Assy	200102-00020	IDLER,TRACK	2
	Sprocket	200108-00004A	SPROCKET	2
	Upper Roller	200105-00002C	ROLLER,UPPER	4
	Lower Roller	200104-00007C	ROLLER,LOWER	18

Undercarriage

DOOSAN Genuine Parts

RUBBER TRACK(MINI EXCAVATOR)

The superior operation capability is specifically designed for DOOSAN machine.



- FEATURES & BENEFITS**
- Less damage to the ground and low ground pressure
 - Low vibration and noise
 - Machine weight reduction and high-speed operation

UC MAJOR COMPONENTS BY MODEL

Model	Classification	Part No.	Description	Q'ty/Mac.
DX10Z	Rubber Track	7255246	TRACK,RUBBER;180MM	2
	Idler Assy	7187172	IDLER,TRACK	2
	Sprocket	7134493	SPROCKET	2
	Roller Assy	7165324	ROLLER	6
DX17Z	Rubber Track	7259426	TRACK,RUBBER;230MM	2
	Idler Assy	7218754	IDLER,TRACK	2
	Sprocket	7148525	SPROCKET	2
DX19	Rubber Track	7259426	TRACK,RUBBER;230MM	2
	Idler Assy	7218754	IDLER,TRACK	2
	Sprocket	7148525	SPROCKET	2
	Roller Assy	7136983	ROLLER	6

Model	Classification	Part No.	Description	Q'ty/Mac.
DX27Z	Rubber Track	K1014357	TRACK,RUBBER;250MM	2
		200106-00115	TRACK,RUBBER;300MM	2
	Idler Assy	200102-00100	IDLER,TRACK	2
	Sprocket	200108-00179	SPROCKET	2
	Upper Roller	K1014356	ROLLER,UPPER	2
	Lower Roller	200104-00071	ROLLER,LOWER	6
DX35Z	Rubber Track	200106-00117	TRACK,RUBBER;300MM	2
	Idler Assy	200102-00101	IDLER,TRACK	2
	Sprocket	200108-00180	SPROCKET	2
	Upper Roller	K1008224A	ROLLER,UPPER	2
Lower Roller	200104-00075	ROLLER,LOWER	8	
	DX62R-3	Rubber Track	200110-00007 (S/N: 1001-1291)	TRACK,RUBBER;400MM
200110-00021 (S/N: 1292-)			TRACK,RUBBER;400MM	2
Idler Assy		200102-00003B	IDLER,TRACK	2
Sprocket		200108-00020A	SPROCKET	2
Upper Roller		2270-1134A	ROLLER,UPPER	2
Lower Roller	200104-00016A (S/N 1001-1409)	ROLLER,LOWER	10	
	200104-00061E (S/N 1410-)	ROLLER,LOWER	10	
DX63-3	Rubber Track	200110-00007 (S/N: 1001-1544)	TRACK,RUBBER;400MM	2
		200110-00021 (S/N: 1545-)	TRACK,RUBBER;400MM	2
	Idler Assy	200102-00003B	IDLER,TRACK	2
	Sprocket	200108-00020A	SPROCKET	2
	Upper Roller	2270-1134A	ROLLER,UPPER	2
Lower Roller	200104-00016A (S/N 1001-1782)	ROLLER,LOWER	10	
	200104-00061E (S/N 1783-)	ROLLER,LOWER	10	
DX85R-3	Rubber Track	200110-00015 (S/N: 1001-1654)	TRACK,RUBBER;450MM	2
		200110-00023 (S/N: 1655-)	TRACK,RUBBER;450MM	2
	Idler Assy	200102-00073	IDLER,TRACK	2
	Sprocket	200108-00185	SPROCKET	2
	Upper Roller	200105-00007	ROLLER,UPPER	2
Lower Roller	270-00040C	ROLLER,LOWER	10	

Doosan Infracore Construction Equipment

Aftermarket Sales Reference Book

Engine

DOOSAN Genuine Parts



Doosan Engine Overhaul Series
[Stage II & Stage III A]
REMAN Engine

Engine

DOOSAN Genuine Parts

PISTON LINER KIT

Doosan Engine Overhaul Series [Stage II & Stage III A]

Save your time and costs with the Piston Liner KIT.

The DOOSAN Engine Overhaul-Piston Liner KIT includes Pistons, Liners, and Piston Ring KIT at one special price.

- BENEFITS**
- Special price : Save more than 20% on the total price of individual parts
 - Easy to order : One part number, One price
 - Fast delivery : Ready to ship

COMPONENTS One Piston Liner KIT includes



1. 6 Pistons
2. 6 Liners
3. 1 Piston Ring KIT

Model	Engine Model	Piston Liner KIT	Piston	Liner	Piston Ring KIT
S300LC-V	ECPEA	101529-00651	130602-00804	150117-00049	401004-00101
S340LC-V	ECIEC	101529-01038	130602-00590	65.01201-0072A	65.02503-8238
S500LC-V	ECIEA	101529-00648	130602-00590	150117-00046A	65.02503-8238
DX225LC	EUTEG (A Grade)	101529-01104	65.02501-0477	65.01201-0076	65.02503-8047
	EUTEG (B Grade)	101529-01105	65.02501-0478	65.01201-0077	65.02503-8047
DX300LC	EUPEB [~111210]	65.01200-8001	65.02501-0505	65.01201-0074	65.02503-8038
	EUPEB [111211~]	101529-01108	130602-00794	150117-00050	401004-00083
DX480LC	EUJEB	65.01200-8002V	130602-01775	65.01201-0073B	401004-00022

BEARING KIT

Doosan Engine Overhaul Series [Stage II & Stage III A]

Save your time and costs with Bearing KIT.

The DOOSAN Engine Overhaul-Bearing KIT includes Crankshaft Bearings, Thrust Washers, and Con-rod Bearings at one special price.

- BENEFITS**
- Special price : Save more than 20% on the total price of individual parts
 - Easy to order : One part number, One price
 - Fast delivery : Ready to ship

COMPONENTS One Piston Bearing KIT includes



1. 7 Crankshaft bearings [DX225LC/DX300LC]
4 Crankshaft bearings [DX480LC/DX420LCA]
2. 2 Thrust washers-1
3. 2 Thrust washers-2
4. 6 Con-rod bearings-1
5. 6 Con-rod bearings-2

Model	Engine Model	Size Option (mm)	Engine Bearing KIT	Crankshaft Bearing-1	Crankshaft Bearing-2	Thrust Washer-1	Thrust Washer-2	Con-rod Bearing-1	Con-rod Bearing-2
S300LC-V	ECPEA	Standard	101529-00861	140103-00075		120816-00083	120816-00084	65.02410-0010	
		0.25	101529-00862A	140103-00076		65.01150-0019	65.01150-0023A	65.02410-0011	
		0.50	101529-00863A	140103-00077		65.01150-0020	65.01150-0024A	65.02410-0012	
S500LC-V	ECIEA	Standard	101529-00867	65.01110-6115		65.01150-0017A	65.01150-0018B	65.02410-6106	
		0.25	101529-00868	65.01110-6116		65.01150-0048A	65.01150-0052B	65.02410-6107	
		0.50	101529-00869	65.01110-6117		65.01150-0049A	65.01150-0053B	65.02410-6108	
DX225LC	EUTEG	Standard	101529-01130					65.02410-0040	65.02410-0050
		0.25	101529-01131	65.01110-6140A		65.01150-6008		65.02410-0041	65.02410-0051
		0.50	101529-01132					65.02410-0042	65.02410-0052
DX300LC	EUPEB	Standard	101529-01133	140103-00075		120816-00083A	120816-00084A	140112-00011	140112-00012
		0.25	101529-01134	140103-00076		65.01150-0019	65.01150-0023A	140112-00015	140112-00019
		0.50	101529-01135	140103-00077		65.01150-0020	65.01150-0024A	140112-00016	140112-00020

Engine

DOOSAN Genuine Parts

VALVE KIT

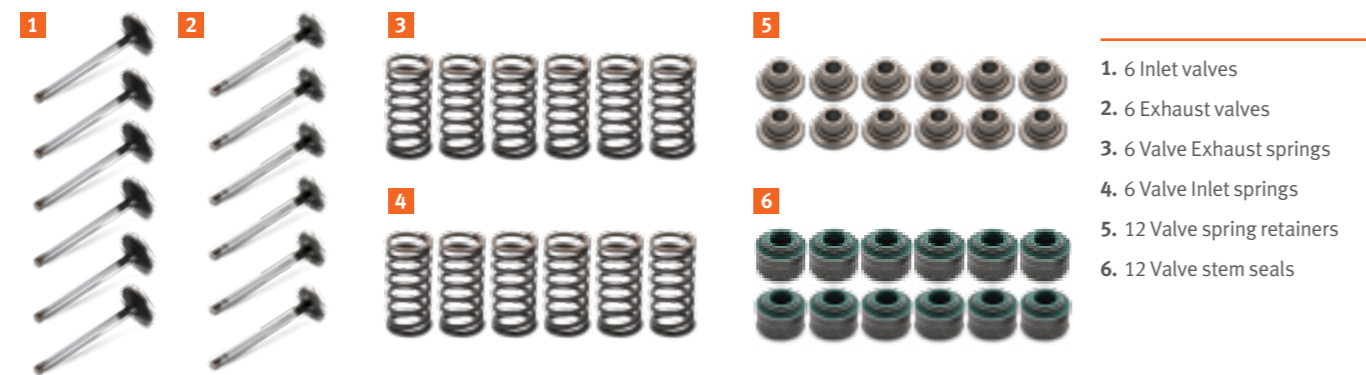
Doosan Engine Overhaul Series [Stage II & Stage III A]

Save your time and costs with Valve KIT.

The DOOSAN Engine Overhaul - Valve KIT includes Inlet Valves, Exhaust Valves, Valve Springs, Valve Spring Retainers, and Valve Stem Seals at one special price.

- BENEFITS**
- Special price : Save more than 20% on the total price of individual parts
 - Easy to order : One part number, One price
 - Fast delivery : Ready to ship

COMPONENTS One Valve KIT includes



1. 6 Inlet valves
2. 6 Exhaust valves
3. 6 Valve Exhaust springs
4. 6 Valve Inlet springs
5. 12 Valve spring retainers
6. 12 Valve stem seals

Model	Engine model	Engine Valve KIT	Inlet valves	Exhaust valves	Valve Exhaust springs	Valve Inlet springs	Valve spring retainers	Valve stem seals
S500LC-V	ECIEA	101529-00856	65.04101-0050A	65.04101-0044	65.04102-6004A	65.04102-0066	65.04103-0014	65.04902-0010
DX225LC	EUTEG	101529-01126	65.04101-0065B	65.04101-0066B	65.04102-0024		65.04103-0018	65.04902-0016
DX300LC	EUPEB	101529-01127	65.04101-0059C	65.04101-0060B	65.04102-6011B		65.04103-0016	65.04902-0020
DX420LC	EUJED	101529-01128	65.04101-0061C	65.04101-0062C	65.04102-0022A	65.04102-6012A	65.04103-0017	65.04902-0020
DX480LC	EUJEB	101529-01129	65.04101-0061C	65.04101-0062C	65.04102-0022A		65.04103-0017	65.04902-0020

REMAN ENGINE

DOOSAN REMAN

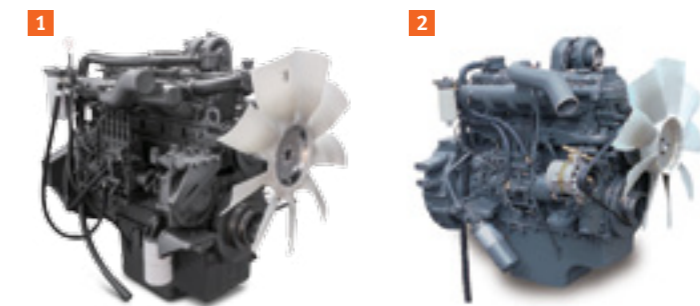
Save your time and costs with DOOSAN's REMAN Engine.

DOOSAN Infracore, which always pursues customer's satisfaction, has released the Reman Engine for DOOSAN Excavators at an economic price to offer our partners much better service.

- BENEFITS**
- Lower Cost : 30%~40% saving compared to a new engine
 - Superior Quality : Same reliable performance as a new DOOSAN engine
 - Safe Investment : Guarantee 1,000-hour warranty as same as a brand-new engine
 - Reduced downtime : Save time on engine overhaul and repairs
 - Environmentally-friendly : Recycling, resource conservation, energy conservation

- FEATURES**
- All remanufacturing processes are designed and approved by DOOSAN.
 - DOOSAN REMAN engines are upgraded to include critical design improvements.
 - 100% DOOSAN genuine parts are used in the remanufacturing process.
 - DOOSAN REMAN engines meet the same performance specifications as new DOOSAN engines.
 - 100% of remanufactured products undergo DOOSAN's certified performance testing.

1. DE08TIS
2. DE12TIS



No	Machine Model	REMAN Parts Number	Engine Model	Engine Suffix	Emission	Max. Power kW(ps)/rpm	Max. Torque Nm(kg.m)/rpm
1	M300-V	ECPLA-RM	DE08TIS	ECPLA	Stage II	156(212) / 2,100	902(92) / 1,300
2	S500LC-V	ECIEA-RM	DE12TIS	ECIEA	Stage II	238(323) / 2,000	1323(135) / 1,400
3	M400-V	ECILC-RM	DE12TIS	ECILC	Stage II	210(285) / 2,100	1275(130) / 1,200

Doosan Infracore Construction Equipment

Aftermarket Sales Reference Book

Hydraulic

DOOSAN Genuine Parts



Hydraulic Economic Parts
Economic Parts for Main Pump
O-Ring Box
Seal Kit List by Model

Hydraulic

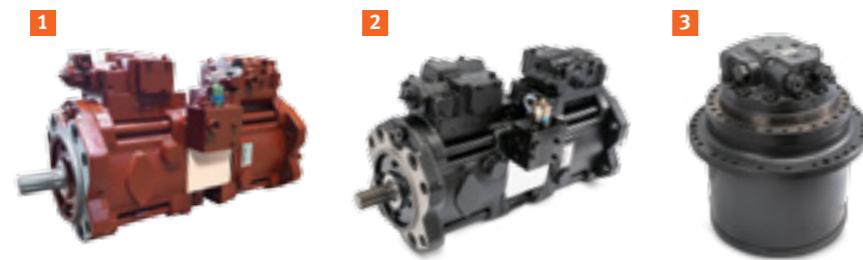
DOOSAN Genuine Parts

HYDRAULIC ECONOMIC PARTS

Highly efficient Excavator Hydraulic components at Economic Price.

DOOSAN provides new Hydraulic Economic Parts at affordable price to diverse needs of used machine or older machine owners.

- FEATURES & BENEFITS**
- Reliable quality at a reasonable price
 - Inner parts are 100% interchangeable with the original parts
 - Reliable product guaranteed by Doosan



1. Main pump [Solar]
2. Main pump [DX]
3. Travel Device

PART NUMBERS

Part Name	Applied Model	EP Part Number	Original Part No.
Main Pump	DX140LC (S/N: 5001 ~ 6695, S/N: 50001~)	K1024107A-EP	K1024107A
	DX140LC (S/N: 6696 ~)	400914-00514A-EP	400914-00514A
	DX140LC-3	400914-00174A-EP	400914-00174A
	DX225LC	400914-00212E-EP	400914-00212E
	DX225LC-3	400914-00165G-EP	400914-00165G
	DX300LC	400914-00393A-EP	400914-00393A
	S130-V / S140-V	2401-9236B-EP	2401-9236B
	S140W-V / S160W-V	401-00252B-EP	401-00252B
	S200W-V / S210W-V	400914-00218C-EP	400914-00218C
	S220LC-V	2401-9225C-EP	2401-9225C
	S225LC-V	400914-00026-EP	400914-00026
	S225NLC-V	400914-00219C-EP	400914-00219C
	S255LC-V	400914-00220C-EP	400914-00220C
S300LC-V	400914-00401A-EP	400914-00401A	
Travel Device	S220LC-V / S225LC-V	401-00454C-EP	401-00454C

※ Doosan Economic Parts are designed for aftermarket uses in order to meet customer's needs with proven quality & reasonable price, and are different from production parts. Although Doosan Economic Parts are tested for high reliability, it is recommended that they are used for out-of-warranty machines.

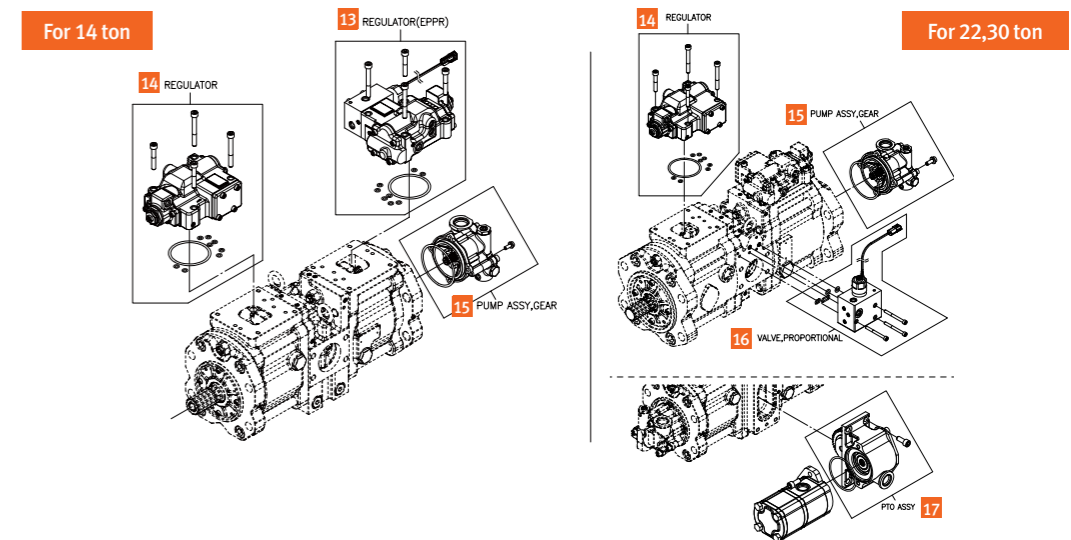
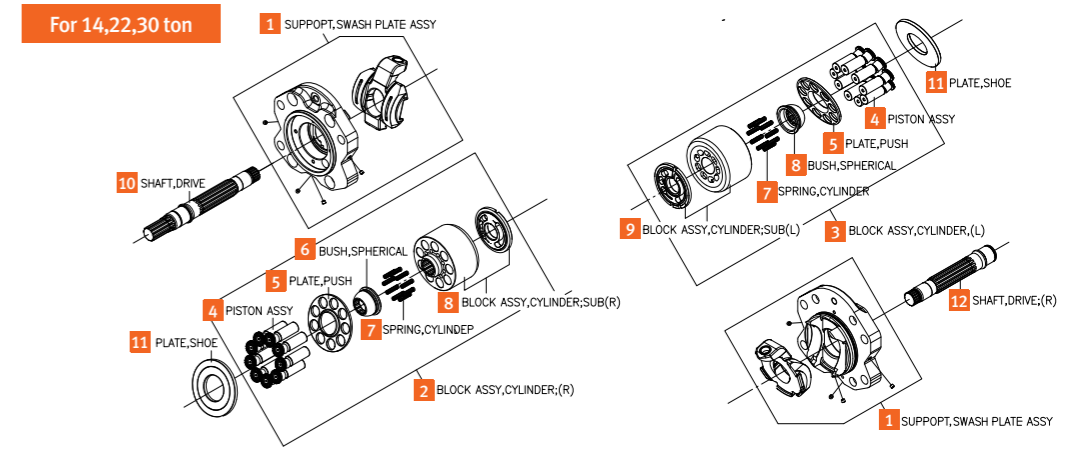
ECONOMIC PARTS FOR MAIN PUMP

Save your money with economic parts for main pump inner parts when repair aged machines

DOOSAN provides the main pump inner parts for Doosan Excavator at an economic price to give our partners much better service. The inner parts for the main pump will be of great benefit thanks to their reliable quality and reasonable price.

- BENEFITS**
- Reliable quality at a reasonable price.
 - Covered by the Doosan parts warranty (same warranty period as Doosan genuine parts).

COMPONENTS



Hydraulic

DOOSAN Genuine Parts

PART NUMBERS & APPLIED MODEL

Parts for 14 ton	EP Part No.	OEM Part No.	S130LC-V	S140LC-V	S140-V	DX140LC	DX140LC-3
1	SUPPORT;SWSH PLATE ASSY	110958-03702-EP	K9005446	✓	✓	✓	✓
2	BLOCK ASSY,CYLINDER;(R)	150102-00895-EP	No 4,5,6,7,8	✓	✓	✓	✓
3	BLOCK ASSY,CYLINDER;(L)	150102-00893-EP	No4,5,6,7,9	✓	✓	✓	✓
4	PISTON ASSY	130602-01676-EP	K9005444	✓	✓	✓	✓
5	PLATE,PUSH	250201-04647-EP	K9005451	✓	✓	✓	✓
6	BUSH,SPHERICAL	131002-01083-EP	K9005443/131002-00713	✓	✓	✓	✓
7	SPRING,CYLINDER	111601-01109-EP	K9005442	✓	✓	✓	✓
8	BLOCK ASSY,CYLINDER;SUB(R)	150102-00937-EP	410-00009/2953802827	✓	✓	✓	✓
9	BLOCK ASSY,CYLINDER;SUB(L)	150102-00938-EP	410-00010/2953802828	✓	✓	✓	✓
10	SHAFT,DRIVE	130712-02014-EP	113446B	✓	✓	✓	
10	SHAFT,DRIVE	130712-02762-EP	130712-01692			✓	✓
11	PLATE,SHOE	250201-04092-EP	1.412-00104	✓	✓	✓	✓
12	SHAFT,DRIVE;(R)	130712-02012-EP	K9005441	✓	✓	✓	✓
13	REGULATOR;EPPR VALVE	400825-00169-EP	1.421-00013	✓	✓		
13	REGULATOR;EPPR VALVE	400825-00302-EP	K9005448C			✓	✓
14	REGULATOR	400825-00170-EP	1.421-00015	✓	✓	✓	
14	REGULATOR	400825-00301-EP	K9005447D			✓	✓
15	PUMP ASSY,GEAR	400910-00288-EP	K9005449A	✓	✓	✓	✓
15	PUMP ASSY,GEAR	400910-00304-EP	1.241-00004	✓	✓	✓	

Parts for 22 ton	EP Part No.	OEM Part No.	S200W-V	S210W-V	S220LC-V	S225LC-V	DX220LC	DX225LC	S225NLC-V	S255LC-V
1	SUPPORT;SWSH PLATE ASSY	110958-03701-EP	400901-00054/K9001176	✓	✓	✓	✓	✓	✓	✓
2	BLOCK ASSY,CYLINDER;(R)	150102-00894-EP	No 4,5,6,7,8	✓	✓	✓	✓	✓	✓	✓
3	BLOCK ASSY,CYLINDER;(L)	150102-00892-EP	No4,5,6,7,9	✓	✓	✓	✓	✓	✓	✓
4	PISTON ASSY	130602-01677-EP	1.409-00167/K9004869	✓	✓	✓	✓	✓	✓	✓
5	PLATE,PUSH	250201-04648-EP	250201-01770/1.412-00098	✓	✓	✓	✓	✓	✓	✓
6	BUSHING,SPHERICAL	131002-01084-EP	K9006408/1.110-00101	✓	✓	✓	✓	✓	✓	✓
7	SPRING,CYLINDER	111601-01110-EP	129-00044/1.131-00127	✓	✓	✓	✓	✓	✓	✓
8	BLOCK ASSY,CYLINDER;SUB(R)	150102-00939-EP	K9006409/K9004839	✓	✓	✓	✓	✓	✓	✓
9	BLOCK ASSY,CYLINDER;SUB(L)	150102-00940-EP	K9006410/K9004867	✓	✓	✓	✓	✓	✓	✓
10	SHAFT,DRIVE	130712-02015-EP	1.405-00060A			✓	✓	✓		
10	SHAFT,DRIVE	130712-02312-EP	2.405-00121/405-00007	✓	✓				✓	✓
11	PLATE,SHOE	250201-04091-EP	412-00006/1.412-00110	✓	✓	✓	✓	✓	✓	✓
12	SHAFT,DRIVE;(R)	130712-02013-EP	405-00008/1.405-00064	✓	✓	✓	✓	✓	✓	✓
14	REGULATOR	400825-00171-EP	1.421-00032		✓					
14	REGULATOR	400825-00172-EP	1.421-00009			✓				
14	REGULATOR	400825-00226-EP	300733-00041/K9001833				✓	✓		
14	REGULATOR	400825-00239-EP	719941A	✓	✓					
14	REGULATOR	300733-00054-EP	300733-00045						✓	✓
14	REGULATOR	300733-00055-EP	300733-00044							✓
15	PUMP ASSY,GEAR	400910-00289-EP	1.241-00009			✓	✓			
15	PUMP ASSY,GEAR	400910-00290-EP	K9001811			✓				
16	VALVE,PROPORTIONAL	410116-01117-EP	420-00127	✓	✓	✓	✓	✓	✓	✓
17	PTO ASSY	130807-00053-EP	230-00042	✓	✓					
17	PTO ASSY	400916-00929-EP	K1006551						✓	✓

Parts for 30 ton	EP Part No.	OEM Part No.	S300LC-V	DX300LC	
1	SUPPORT;SWSH PLATE ASSY	110958-03701-EP	400901-00054/K9001176	✓	✓
2	BLOCK ASSY,CYLINDER;(R)	150102-00917-EP	No 4,5,6,7,8	✓	✓
3	BLOCK ASSY,CYLINDER;(L)	150102-00918-EP	No4,5,6,7,9	✓	✓
4	PISTON ASSY	130602-01678-EP	K9006418	✓	✓
5	PLATE,PUSH	250201-04649-EP	1.412-00098	✓	✓
6	BUSHING,SPHERICAL	131002-01084-EP	K9006408/1.110-00101	✓	✓
7	SPRING,CYLINDER	111601-01111-EP	1.131-00131	✓	✓
8	BLOCK ASSY,CYLINDER;SUB(R)	150102-00941-EP	K9006419	✓	✓
9	BLOCK ASSY,CYLINDER;SUB(L)	150102-00942-EP	K9006420	✓	✓
10	SHAFT,DRIVE	130712-02100-EP	1.405-00055	✓	✓
11	PLATE,SHOE	250201-04091-EP	412-00006	✓	✓
12	SHAFT,DRIVE;(R)	130712-02101-EP	1.405-00057	✓	✓
14	REGULATOR	400825-00193-EP	1.421-00018	✓	
14	REGULATOR	400825-00228-EP	K9001189		✓
15	PUMP ASSY,GEAR	400910-00302-EP	1.241-00012/K9001192	✓	✓
16	VALVE,PROPORTIONAL	410116-01175-EP	1.420-00060	✓	
16	VALVE,PROPORTIONAL	410116-01323-EP	K9001178		✓

※ Economic Parts are released only for A/S component parts. It is strongly recommended that they are used with machines whose warranty has expired.

Hydraulic

DOOSAN Genuine Parts

O-RING BOX

Save time and costs with the O-Ring box.

Doosan's O-Ring Box provides various O-rings compatible with all DOOSAN machines.

- BENEFITS**
- Special price: More than 30% saving on the total price of individual parts.
 - Easy to order : One part number & One price for various O-rings.
 - Portable: All O-rings in one box

COMPONENTS



- 1. K9006411
- 2. 401002-01216

O-Ring Box	Type	Q'ty	Size	Remark
K9006411	30 items	256 pcs	260 X 180 X 45	Solar/Mega Model
401002-01216	45 items	595 pcs	360 X 285 X 58	DX/DL Model

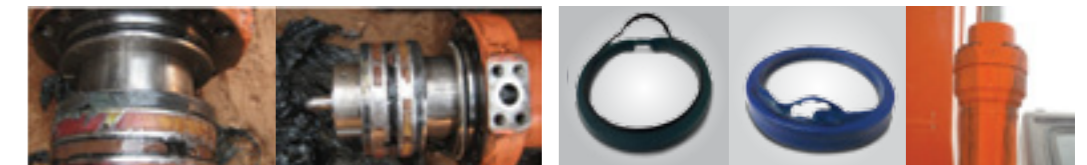
SEAL KITS

High reliability based on the quality verified through various types of durability and field tests.

Doosan Seal Kits use the reliable products only, which have been verified for stable quality. On the other hand, the non-genuine seal kits consisting of random products that are not verified may cause machine failures.



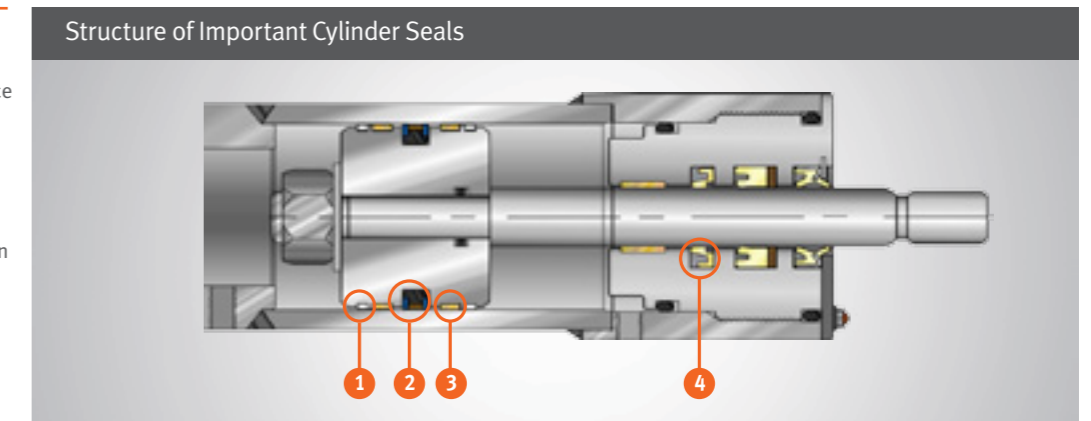
DEFECTIVE CYLINDERS FOR USING NON-GENUINE PARTS



- 1. Scratches**
When a compressive strength of wear rings that prevent eccentricity in pistons and rods is low, the eccentricity of cylinders cause damage to the cylinders.
- 2. Oil Leakage**
A low hardness of back-up rings in buffer seals pushes the rings out, which pushes rod seals out and causes damage and oil leakage as a result.

GENUINE DOOSAN SEAL KITS OPTIMIZED FOR OPERATING ENVIRONMENTS OF HYDRAULIC CYLINDERS

- 1. Slide Ring**
- Excellent elongation, rigidity and wear resistance
- 2. Piston Seal**
- Greater hardness and tensile strength
- 3. Wear Ring**
- Lower coefficient of friction and enhanced wear resistance
- 4. Buffer(Rod) Seal**
- Excellent thermal resistance, elasticity and restitution



Hydraulic

DOOSAN Genuine Parts

SEAL KIT LIST BY MODEL

DOOSAN's Genuine Seal Kit is designed to deliver the best performance at the lowest possible operating cost.

- Specially designed for DOOSAN hydraulic systems.
- Satisfies specific material and dimensional requirements.

Model	Main Pump	Travel Motor	Swing Motor	Track Spring	Control Valve	Center Joint	Bucket Cylinder	Boom Cylinder	Arti-boom Cylinder	Arm Cylinder	Dozer Cylinder	Outtrigger Cylinder
DX140LC-3	K9001902A	401107-00618A	401107-01169	401107-00934	-	401107-01330 (S/N: 50064 ~)	401107-00350A	401107-00155A	401107-01178	401107-00157A	401107-00364A	-
						K1038790KT (S/N: 50001 ~ 50063)						
DX140LCR-3	401107-00062A	401107-00618A	401107-01169	401107-00934	-	401107-01330	401107-00350A	401107-00155A	401107-01178	401107-00157A	401107-00364A	-
DX140LCR-5	401107-00062A	401107-00618A (S/N: 1001~1418)	401107-01169	401107-00934	-	401107-01330	401107-00340A Arm 1.9m	401107-00155A	401107-01178	401107-00157A	401107-00364A	-
		401107-02379 (S/N: 1419~)					401107-00350A Arm 2.1m / 2.5m / 3.0m					
DX160LC-3	K9001902A	401107-00618A	401107-01169	401107-00677	-	401107-01330	401107-00350A	401107-00155A	401107-01178	401107-00157A	401107-00364A	-
DX140LC-5 / DX160LC-5	-	401107-00618A (S/N: 1001~1336)	401107-01169	401107-00934	-	401107-01330	401107-00340A Arm 1.9m	401107-00155A	401107-01178	401107-00157A	401107-00364A	-
		401107-02379 (S/N: 1337~)					401107-00350A Arm 2.1m / 2.5m / 3.0m					
DX180LC-3	-	K9004604	K9002875A	401107-00677	-	K1038790KT	401107-00155A	401107-00157A STD	401107-00210A	401107-00146A	401107-00370A	-
								401107-00259A Arti.				
DX180LC-5	-	K9004604	K9002875A	401107-00677	-	401107-01330	401107-00155A	401107-00157A STD	401107-00210A	401107-00146A	401107-00370A	-
								401107-00259A Arti.				
DX225LC-3	401107-01037 (S/N: 50001~50217)	K9008310	K9002875A	401107-00677	420-00295KT	K1038790KT (S/N: 50001~50006)	401107-00298A Arm 2.4m / 2.9m	401107-01220	401107-00584	401107-00555	401107-00370A	-
	401107-02267 (S/N: 50218~)					401107-01330 (S/N: 50007~)	401107-00340A Arm 6.2m					
DX225LC-5	401107-01626	K9008310	K9002875A	401107-00677 (S/N: 1001~1995)	420-00295KT	401107-01330	401107-00298A Arm 2.4m / 2.9m	401107-01220	401107-00584	401107-00555	401107-00370A	-
				401107-00677A (S/N: 1996~)			401107-00340A Arm 6.2m					
DX235LCR-5	-	-	K9002875A	401107-00677 (S/N: 1001~1704)	401107-01596	401107-01330	401107-00298A	401107-00147A	401107-00584	401107-01573	401107-00370A	-
				401107-00677A (S/N: 1705~)								
DX255LC-3	401107-01218	K9008310	K9002875A	401107-01273	420-00295KT	401107-01330	401107-01220	401107-00147A	401107-01221	401107-00555	-	-
DX255LC-5	401107-01218	K9008310	K9002875A	401107-01273	420-00295KT	401107-01330	401107-01220	401107-00147A	401107-01558	401107-00555	-	-
DX300LC-3	401107-01044	401107-01052	K9002875A	401107-00965	-	K1038790KT (S/N: 50001~50101)	401107-01047 Arm 2.5m	401107-00146	401107-00578	401107-01050	-	-
						401107-01330 (S/N: 50102)	401107-00340A Arm 7m					

Hydraulic

DOOSAN Genuine Parts

SEAL KIT LIST BY MODEL

Model	Main Pump	Travel Motor	Swing Motor	Track Spring	Control Valve	Center Joint	Bucket Cylinder	Boom Cylinder	Arti-boom Cylinder	Arm Cylinder	Dozer Cylinder	Outrigger Cylinder
DX300LC-5	401107-01044	401107-01052	K9002875A	401107-00965	420-00295KT	401107-01330	401107-01046 Arm 2.5m 401107-00340A Arm 7m	401107-00146	401107-00578	401107-01050	-	-
DX340LC-5 / DX350LC-5	-	401107-01052	401107-01105	401107-01023	401107-01080	401107-01321	401107-00584	401107-00584	K9009922	401107-00757	-	-
DX380LC-5	-	401107-01052	401107-01105	401107-01081	401107-01080	401107-01321	401107-00584	401107-00583	-	401107-00757	-	-
DX420LC-5	-	401107-01052	401107-01105	401107-01081	401107-01253	401107-01321	401107-01236	401107-00578	-	401107-00579	-	-
DX490LC-5	-	-	K9002875A	401107-01085	401107-01254	401107-01321	401107-00578	401107-00578	-	401107-01202	-	-
DX140W-3 / DX160W-3	-	-	401107-01169	-	-	-	401107-00138A STD 401107-00350A Arti.	401107-00155A	401107-01178	401107-00157A	401107-00139A	401107-00404A
DX165W-5	-	-	401107-01169	-	-	-	401107-00340A STD 401107-00350A Arti.	401107-00155A	401107-01178	401107-00157A	401107-00139A	401107-00404A
DX170W-5	-	-	K1000101KT	-	-	-	401107-01632	401107-00157A	401107-00210A	401107-00146A	401107-00404A	K9009863
DX190W-3	-	-	K9002875A	-	-	-	401107-00155A	401107-00259A	401107-00210A	401107-00146A	401107-01239	401107-00370A
DX190W-5	-	-	K9002875A	-	401107-01079	-	401107-00155A	401107-00259A	401107-00210A	401107-00146A	401107-01239 (S/N: 1001~1105)	401107-00370A
DX210W-5	-	-	K9002875A	-	401107-01079	-	401107-00298A	401107-00259A	401107-01870	401107-01573 STD 401107-01871 Arti	401107-01239 (S/N: 1001~1174 / 10001~10008)	401107-00370A (S/N: 1175~ / 10009~)

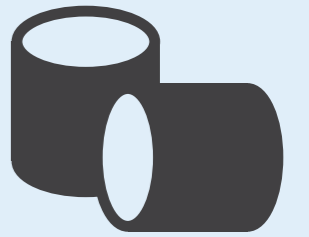
Track spring lists are based on the seal kit numbers of the standard track

Doosan Infracore Construction Equipment

Aftermarket Sales Reference Book

Drive Train, Other

DOOSAN Genuine Parts



Axle Seal Kit
Bush & Pin for DX Model
Seat Cover
Harness Repair Kit
PERO Kit(Rotating Pipe Kit)
Battery

Drive Train, Other

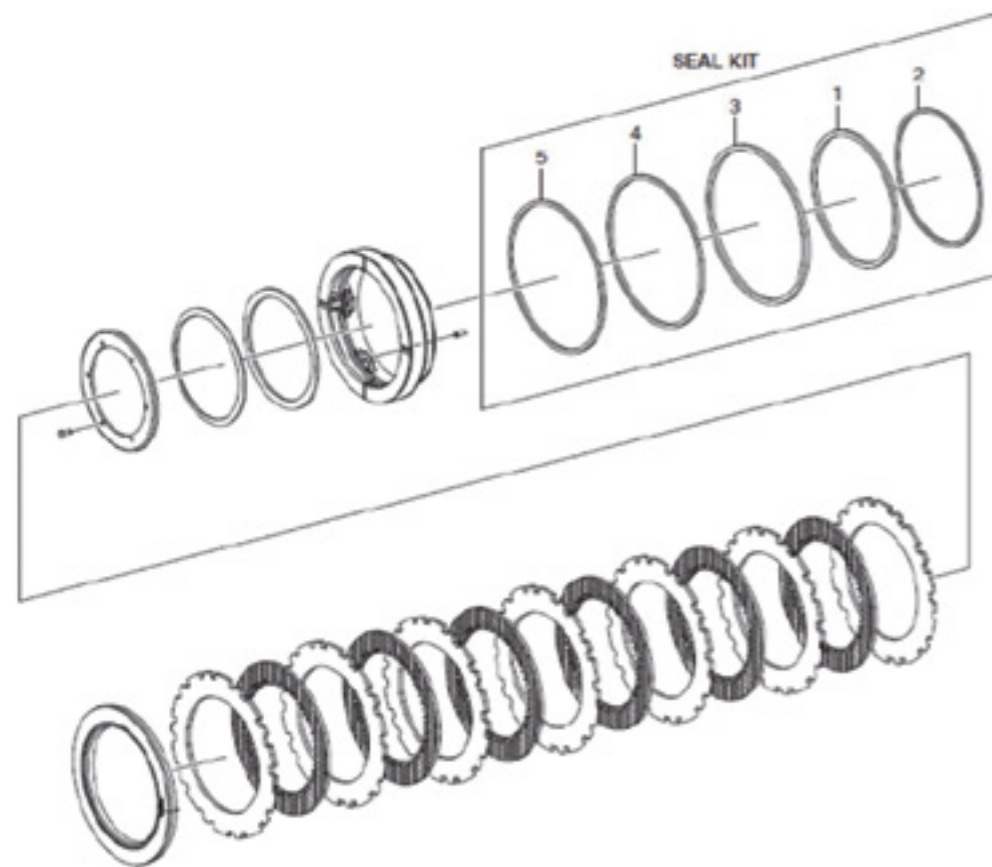
DOOSAN Genuine Parts

AXLE SEAL KIT

Save your time and costs with the Axle Seal KIT.

The Axle Seal KIT provides essential 5 seals for most DOOSAN Wheel Loaders.

- BENEFITS**
- Special price : More than 20% saving on the total price of individual parts
 - Easy to order : One part number, one price



Machine	Axle Seal KIT	U-RING (2pcs)	RING; SUPPORT (2pcs)	U-RING (2pcs)	RING; SUPPORT (2pcs)	RING; GUIDE (2pcs)
Wheel Loader	401107-02121	K9000243	K9000241	K9000244	K9000242	K9000168

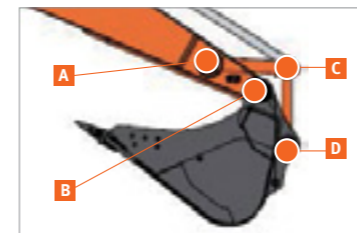
BUSH & PIN FOR DX MODEL

Save your money with economic parts for new Bush & Pin.

DOOSAN offers the Bush & Pin for DOOSAN Excavator at an affordable price to give our partners much better service. The Economic Bush & Pin for DOOSAN Excavator will be a great benefit to you thanks to its reliable quality and reasonable price.

- BENEFITS**
- Maintenance costs can be reduced (reasonable price.)
 - DOOSAN guarantees finest quality and perfect fit.
 - Reliable Oil groove-type bush.

COMPONENTS



Item	Model	Location	Economic Parts	Original Parts
Bush	5ton	A	131008-00165	131008-00149
		B	131008-00164	131008-00157
		C	131008-00164	131008-00114
		D	131008-00162	131008-00113
	14Ton	A	131004-00246	131004-00021A
		B	131004-00247	131004-00020A
		C	131004-00247	131004-00022A
		D	131004-00255	131004-00022A
	22Ton	A	131004-00249	131004-00024A
		B	131004-00250	131004-00023A
		C	131004-00250	131004-00025A
		D	131004-00252	131004-00026A
30Ton	A	131004-00252	131004-00002B	
	B	131004-00253	131004-00001B	
	C	131004-00254	131004-00003B	
	D	131004-00253	131004-00001B	
5Ton	A	-	120501-02617A	
	C	-	120501-02618A	
	B & D	-	120501-02619	
14Ton	A	-	120501-01042	
	C	-	120501-01042	
Pin	22Ton	B & D	-	120501-01041
		A	-	120501-01065
30Ton	22Ton	C	-	120501-00130
		B & D	-	120501-01052
	30Ton	A	-	120501-01081
		C	-	120501-03106
B & D	-	120501-00028A		

Drive Train, Other

DOOSAN Genuine Parts

SEAT COVER

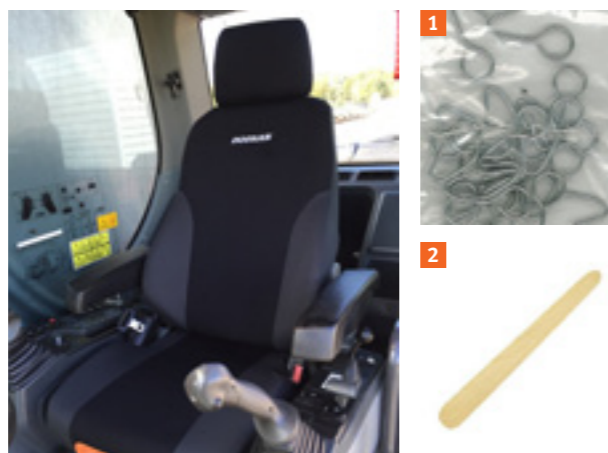
Top-of-the-range quality Doosan Seat cover with the tailored design.

Doosan Seat Cover is designed specifically for Doosan machines.

- FEATURE & BENEFITS**
- Custom-tailored specifically for the interior design of DOOSAN machine.
 - High-quality at a reasonable price
 - Excellent durability and increased comfort with added padding.
 - Machines are washable at 30°

- COMPONENTS**
- 1 Backrest cover
 - 1 Seat cover
 - 1 Headrest cover

INSTALLATION TIME + / - 30 mins



1. hook
 2. wooden spatula

FITTING INSTRUCTIONS:

1. Remove the headrest by pushing on the clip on the top of the backrest just beside the stick of the headrest.
2. Slide the backrest cover over the backrest and stick the hook⁽¹⁾ fastener together on the bottom of the cover.
3. Install the cover on the seating and fix the elastics under the seating with the hereby delivered hooks.
4. Slide the material of the cover between the original seat and the plastic bit on the front of the seating by using the wooden spatula⁽²⁾.
5. Put the headrest cover on the headrest so that the male hook fastener will be on the front of it.

AVAILABLE SEAT COVER

Item	Part Number	Applied Model
Seat Cover	110508-21698	DX140LC-3, DX140W-3, DX160LC-3, DX225LC-3, DX255LC-3, DX420LC-3, DX490LC-3, DX530LC-3, DX140LC-5, DX235NLC-5, DX235LCR-5, DX255LC-5, DX340LC-5, DX380LC-5, DX170W-5, DX210W-5, DX255LC-5, DX300LC-5, DX340LC-5, DX380LC-5, DX420LC-5, DX490LC-5, DX530LC-5

OTHERS (TBD)

Item	Part Number	Applied Model
Seat Cover	110508-12173	Hydraulic Excavator, DX Series Non-ROPS
	110508-12174	DL Series - 160/200/220/250/450/500
	110508-12175	DL Series - 300/350/400/420/450/500
	110508-12176	DUMPER MOXY Series - 25/26/31/36/41

HARNES REPAIR KIT

Doosan Harness Repair Kits are used to repair main harness and cabin harness for Doosan machines.

- BENEFITS**
- Easy for a technician to repair damaged circuits (wire harnesses and connectors) without having to remove an entire harness loom from the equipment
 - Easy to order - kit has just 1 kit number
 - Portable and an ideal addition to shops and field service trucks

COMPONENTS



Wheel Loader Repair Kit :
 Connectors
 Pigtails
 Tools
 Butt splices
 Heat shrink adhesive
 Lock

Excavator Repair Kit :
 Connectors
 Pigtails
 Tools
 Butt splices
 Heat shrink adhesive

Proper terminal removal, heat shrink, splicing procedures, and application information are included in the manual. The instructions on how to repair the harnesses are located on a USB drive inside one of the drawers in the kit.

Item	Part Number	Applied Model
Wheel Loader Repair Kit	101529-01333	DL200-5, DL200TC-5, DL220-5, DL250-5, DL250TC-5, DL300-5, DL300-5K, DL350-5, DL350-5K, DL420-5, DL420-5 CVT, DL450-5, DL550-5
Excavator Repair Kit	101529-01334	DX140LC-5, DX140LCR-5, DX140W-5, DX180LC-5, DX190W-5, DX210W-5, DX225LC-5, DX235LCR-5, DX255LC-5, DX300LC-5, DX300LC-5K, DX420LC-5, DX490LC-5, DX530LC-5

Drive Train, Other

DOOSAN Genuine Parts

PERO KIT(ROTATING PIPE KIT)

Save time and costs with the Rotational pipework kit.

Complementing one or two-way hydraulic auxiliary, Doosan Rotational Pipework kit allows operating attachments such as demolition shear. These functions are commonly used especially with tilting bucket or for grapple rotation, using the two-way hydraulics of PERO line.

- FEATURES & BENEFITS**
- Save about 10% compared to purchasing all parts individually
 - Easy to order - kit has just 1 kit number
 - As factory fitted original equipment
 - Designed for Doosan excavators
 - Compatible with Doosan attachments
 - Maximize efficiency for tilting and rotation functions



Model	Part Number	Description Standard arm and boom sizes	Reference FIG.
DX140LC-3	420210-03054	3.0 m arm and 4.6 m boom	6260 / 6270 / 6280 / 6950
DX140LC-5	420210-03023	3.0 m arm and 4.6 m boom	6240 / 6250 / 6260 / 6870
DX140LCR-3	420210-02592	3.0 m arm and 4.6 m boom	6220 / 6230 / 6240 / 6250 / 6830
DX140LCR-5 (S/N: 1001~1049)	420210-02742	3.0 m arm and 4.6 m boom	6210 / 6220 / 6230 / 6800
DX140LCR-5 (S/N: 1050~)	420210-02741	3.0 m arm and 4.6 m boom	6210 / 6220 / 6230 / 6800
DX140W-3	420210-03053	2.5 m arm and 4.6 m boom	6230 / 6240 / 6750 / 6820
DX140W-5	420210-02992	2.1 m arm and 4.4 m boom	6240 / 6250 / 6260 / 6270
	420210-02996	2.5 m arm and 4.4 m boom	6240 / 6250 / 6260 / 6650
	420210-03000	2.5 m arm and 4.6 m boom	6240 / 6250 / 7130 / 6650
	420210-02997	2.1 m arm and articulated boom	6240 / 6250 / 6950 / 7070 / 6270
DX160W-5	420210-02998	2.5 m arm and articulated boom	6240 / 6250 / 6950 / 7070 / 6650
	420210-02999	2.1 m arm and 4.6 m boom	6240 / 6250 / 7130 / 6270
	420210-03000	2.5 m arm and 4.6 m boom	6240 / 6250 / 7130 / 6650
	420210-03001	2.1 m arm and 4.4 m boom	6210 / 6220 / 6230 / 6240
DX165W-5	420210-03002	2.5 m arm and 4.4 m boom	6210 / 6220 / 6230 / 6530
	420210-03003	2.1 m arm and articulated boom	6210 / 6220 / 6860 / 6750 / 6240
	420210-03004	2.5 m arm and articulated boom	6210 / 6220 / 6860 / 6750 / 6530
	420210-03005	2.1 m arm and 4.6 m boom	6210 / 6220 / 6920 / 6240
DX170W-5	420210-03006	2.5 m arm and 4.6 m boom	6210 / 6220 / 6920 / 6530
	420210-03007	2.5 m arm and 5.1 m boom	6210 / 6220 / 6230 / 6240
	420210-03008	3.0 m arm and 5.1 m boom	6210 / 6220 / 6230 / 6720
	420210-03009	2.1 m arm and articulated boom	6210 / 6220 / 6960 / 6840 / 6660
DX180LC-5	420210-03010	2.5 m arm and articulated boom	6210 / 6220 / 6960 / 6840 / 6240
	420210-03011	3.0 m arm and articulated boom	6210 / 6220 / 6960 / 6840 / 6720
	420210-03042	3.1 m arm and 5.2 m boom	6250 / 6260 / 6270 / 6760
	420210-03050	2.6 m arm and 5.2 m boom	6250 / 6260 / 6270 / 6280
DX225LC-3	420210-02591	2.9 m arm and 5.7 m boom	6270 / 6280 / 6290 / 6300
DX225LC-5	420210-03026	2.9 m arm and 5.7 m boom	6250 / 6260 / 6270 / 6280
DX235LCR-5	420210-03028	2.9 m arm and 5.7 m boom	6210 / 6220 / 6230 / 6240
DX255LC-5	420210-03025	3.0 m arm and 5.9 m boom	6260 / 6270 / 6280 / 6290
DX300LC-5	420210-03024	3.1 m arm and 6.245 m boom	6260 / 6270 / 6280 / 6290
DX340LC-5	420210-02588	3.2 m arm and 6.5 m boom	6250 / 6260 / 6270 / 6280
DX380LC-5	420210-03027	3.2 m arm and 6.5 m boom	6230 / 6240 / 6250 / 6260
DX420LC-5	420210-02586	3.25 m arm and 6.7 m boom	6250 / 6260 / 6270 / 6280
DX490LC-5	420210-02585	3.35 m arm and 7.1 m boom	6190 / 6200 / 6210 / 6220
DX530LC-5	420210-02584	2.9 m arm and 6.3 m boom	6180 / 6190 / 6660 / 6780

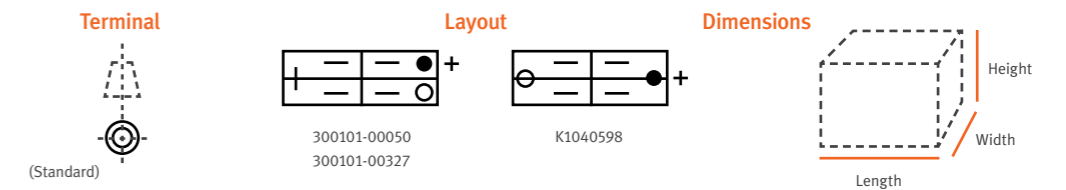
BATTERY

Doosan battery is optimized specifically for Doosan machines and its starting power.

- BENEFITS**
- Vibration resistant construction
 - Maintenance free
 - Optimized for Doosan machines



All batteries are hazardous waste, please dispose of used batteries accordingly. Battery acid is corrosive and to avoid personal injury it is recommended suitable gloves and goggles are worn when filling or testing the batteries.



New Part Number	Type	Voltage	Ah	CCA-SAE	Dimensions		
					L (mm)	W (mm)	H (mm)
300101-00050	Wet	12	180	1150	513	223	223
300101-00327	Wet	12	200	1100	509	267	246
K1040598	Wet	12	120	1000	330	172	240

AVAILABLE DOOSAN BATTERY

Item	Previous Part No.	New Part Number	Q'ty/Mac.	Applied Model
Battery (Wet Type)	2506-6008	300101-00050	2	DX140LC-3, DX140W-3, DX140W-5, DX160LC-3, DX160W-3, DX160W-5, DX170W-5, DX180LC-3, DX190W-3, DX190W-5, DX210W-5, DX225LC-3, DX225LC-5, DX235NLC-5, DX255LC-3, DX255LC-5, DX300LC-3, DX340LC-3, DX380LC-3, DX420LC-3, DX490LC-3, DX530LC-3, DL300-3, DL350-3, DL420-3, DL450-3, DL550-3
				DX420LC-5, DX490LC-5, DX530LC-5, DL300-5, DL350-5, DL420-5, DL450-5, DL550-5
	300101-00323	300101-00327	2	DX420LC-5, DX490LC-5, DX530LC-5, DL300-5, DL350-5, DL420-5, DL450-5, DL550-5
	300101-00327			DX55W, DX62R-3, DX63-3, DX85R-3
	506-00006	K1040598	2	DX140LC-5, DX140LCR-3, DX140LCR-5, DX160LC-5, DX180LC-5, DX235LCR-5, DX300LC-5, DX340LC-5, DX380LC-5, DL200-3, DL200-5, DL220-5, DL250-3, DL250-5

In UK (Cardiff PDC), existing drop shipment direct from vendor continues.

Doosan Infracore Construction Equipment

Aftermarket Sales Reference Book

Product Support

DOOSAN Genuine Parts



DoosanCONNECT
- Filter / Oil Mangement
Protection Plus
Maintenance Calculator

Product Support

DOOSAN Genuine Parts

DOOSANCONNECT - FILTER / OIL MANGEMENT

Preventive Maintenance with DoosanCONNECT

FEATURES & BENEFITS

Benefits

PREVENTIVE MAINTENANCE

Functions

FILTER & OIL MANAGEMENT

- Preventive maintenance by item replacement cycle

LOGO & QR CODE



To download the DoosanCONNECT mobile application, tag the 'QR code'.

DOOSANCONNECT MOBILE APPLICATION

Everywhere with the mobile phone, DoosanCONNECT mobile application will make the management of machine maintenance easier.

FLEET WINDOW

- a** Counts of Filter/Oil, Fault code, Warning, Alert of your fleet
- b** Coloring and text shows status for supplies
- a** When entering the Health menu select supplies, fault code, warning, alert
- b** show details according to **a**
 - Supplies type, usage hour
 - Fault, open status
 - Warning, open status
 - Location history

DOOSANCONNECT WEBSITE

Filter / Oil management which is one of the DoosanCONNECT functions makes easier to maintain by item replacement cycle. Right time maintenance will help to maximize the machine productivity and durability.

FLEET WINDOW

- 1** Filter Management of L&C with W&I status will provide operating notification
 - Remaining oil uses, usage hour
 - Fault, open status
 - Warning, open status
 - Location history
- 2** status check of filter usage by checking a machine in the table, you can see the usage of oil and filter in the current cycle when you use the usage time to DoosanCONNECT filter reporting, as filter information is automatically transmitted to system on the machine's start operation. Also you can change management base on the status and usage hour and filter usage hour. You can see the usage of oil and filter in the table. You can see the usage of oil and filter in the table.

MACHINE WINDOW

- 1** Filter
 - Filter status (open status) in the past view will show
 - You can find all the status of the filter status (open status) in the past view
- 2** Filter status (open status)
 - Remaining oil uses, usage hour
 - Fault, open status
 - Warning, open status
 - Location history

Find out more functions in DoosanCONNECT Website; <https://www.doosanconnect.com>

Product Support

DOOSAN Genuine Parts

PROTECTION PLUS

Doosan Protection Plus is a program of the extended warranty developed especially for Doosan machine.



- FEATURES & BENEFITS**
- Up to 5 years and 10,000 hours of warranty coverage
 - Transparent costs for maintenance and repair of Doosan machine
 - A warranty coverage including parts, labour and travel costs

For registering a Protection Plus plan, there must be a maintenance contract between the dealer and the customer. At the time of the registration, dealer must have attached a pdf of a valid maintenance contract to the online Delivery Report (DR) in the warranty system. The coverage of the maintenance contract should not be less than the coverage of the ordered extended warranty plan.

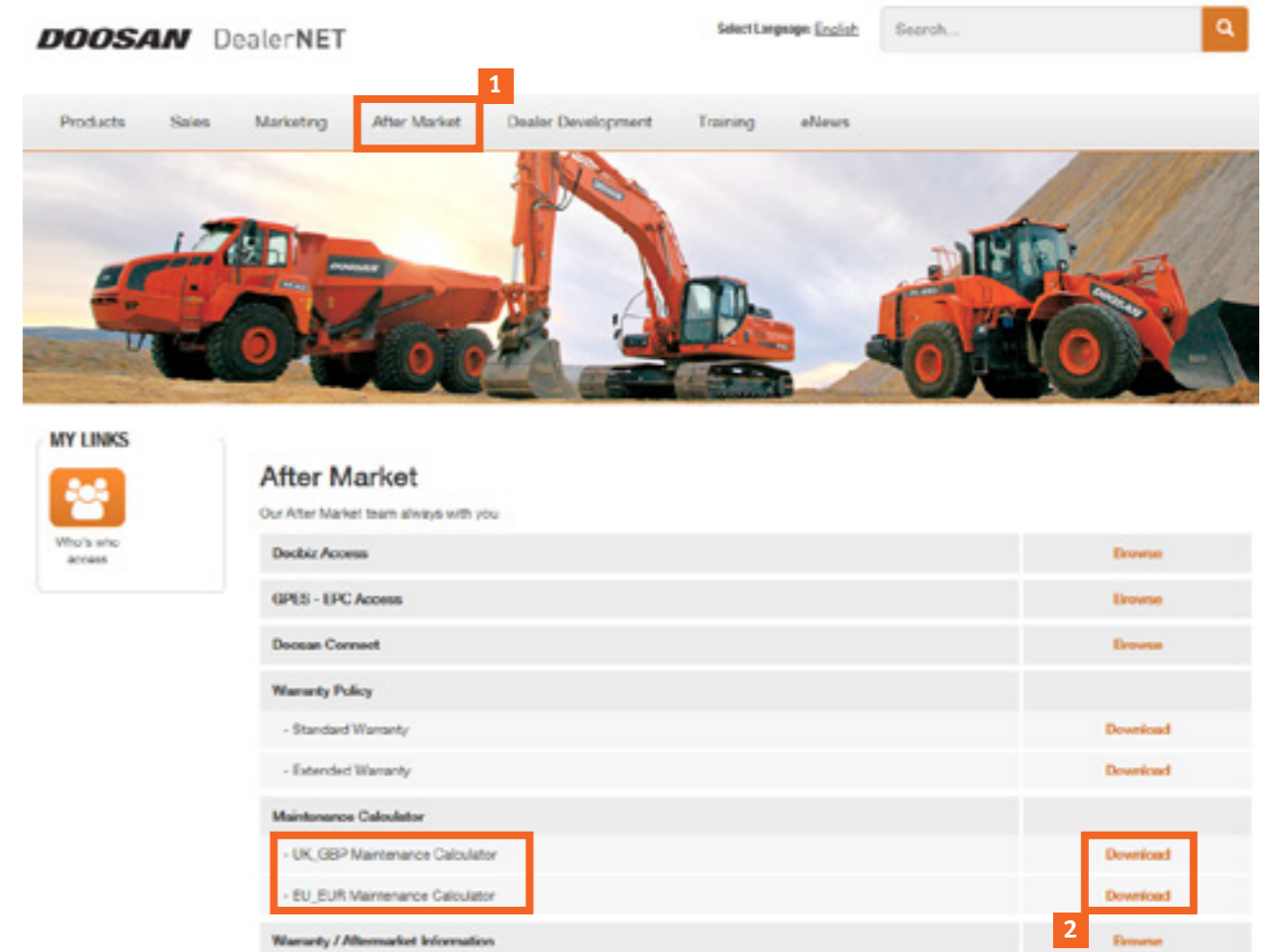
* For more information, please contact Doosan Warranty team.

MAINTENANCE CALCULATOR

2019 Version

Maintenance Calculator is the calculation to offer the maintenance price including extended warranty price, parts price (RRP), labour price.

<https://dealers.doosanequipment.com/after-market/after-market>



Click Download

Product Support

DOOSAN Genuine Parts

1/ CLICK 'MAINTENANCE CALCULATOR' BUTTON

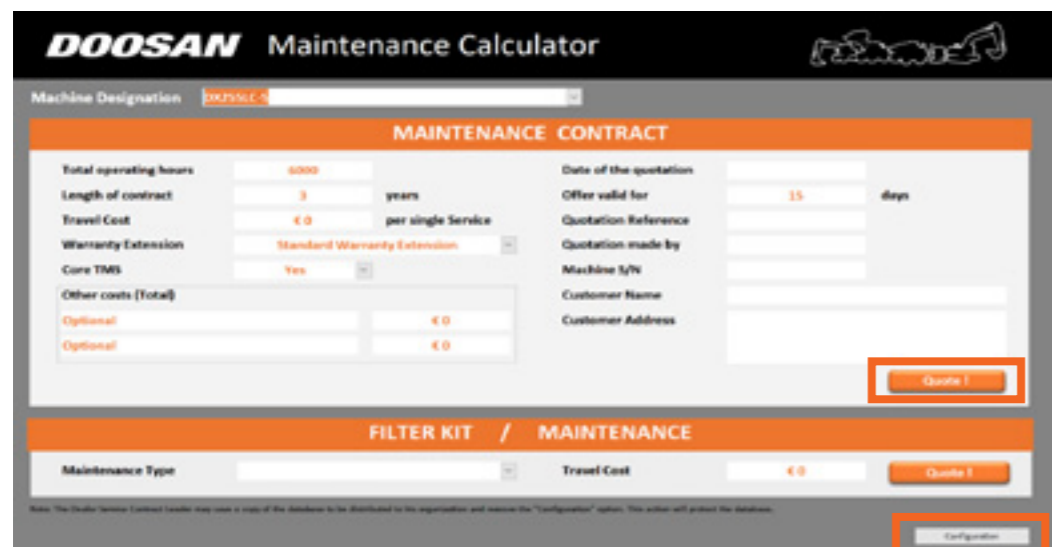


2/ CONFIGURATION

Before starting, the dealers are recommend to put their RRP & Labor Cost. All prices are set according to Doosan Recommended Retail Price.

3/ CLICK 'QUOTE !' BUTTON TO CALCULATE

After completing the configuration, you can get maintenance prices including Extended Warranty, Parts price, Labor price. So please input all necessary information such as Operating hours, Contract years, etc. and then Click 'Quote!'



4/ CLICK 'ENTER'



Enter in the world of Services of DOOSAN

5/ YOU WILL GET THE QUOTATION.

If they want to see other options, click 'Exit' and repeat same.



Doosan Infracore Construction Equipment

Aftermarket Sales Reference Book



Doosan Infracore Europe B.V.,

Doosan Infracore Europe B.V. - Pobřežní 620/3, 186 00
Praha 8-Karlín, Czech Republic

Copyright 2018. Doosan Infracore. All rights reserved.

